



[www.hellosavi.com](http://www.hellosavi.com)



# Table of Contents

2

## **SAVI 3**

Hello Simplicity

16

## **SAVI Hardware**

Seamless Integration, Powerful Experiences

26

## **SAVI Audio**

HiFi Quality for Commercial Applications

34

## **QoraLux Lighting**

High Voltage & Low Voltage Solutions

44

## **Market Solutions**

One Solution for Every Market

54

## **About SAVI**

Revolutionizing Commercial AV



# Hello simplicity.™

Today more than ever, businesses rely on audio, video, and automation experiences to attract, entertain, educate, and support their customers. Creating a highly engaged customer base requires creating a highly engaging AV experience, but traditional systems are often too complicated and costly to manage, support, and operate.

**That changes with SAVI 3.**

SAVI 3 is the latest release of our already-proven AV control and automation system that saves integrators and end-users time and money by streamlining installation, programming, and expense across commercial projects of any size.

Designed with dealers and their customers in mind, SAVI dramatically improves the AV experience by offering a control, management, and automation system that takes hours, not weeks, to program and is so easy to use, virtually no end-user training is required. SAVI operates over the network and is engineered to be high-performance, highly reliable, and robust enough to control 1000s of displays and sources – all while eliminating points of failure by reducing the number of cables and devices required per job.



**SAMI** Simplicity

SAVI 3 combines next-generation AV over IP control with innovative features and time-saving tools to deliver stunning video, immersive audio, integrated lighting, and incredible experiences to your customers in a fraction of the time and cost.

## SAVI Creator

# Program in Hours, Not Weeks

SAVI Creator is a revolutionarily simple new approach to AV programming, packed with a suite of powerful tools enabling dealers to configure systems of any scale, from 10 devices to 1000s, in just hours. With next-generation, no-code features, Creator drastically reduces costs associated with commercial projects while driving more business for integrators.



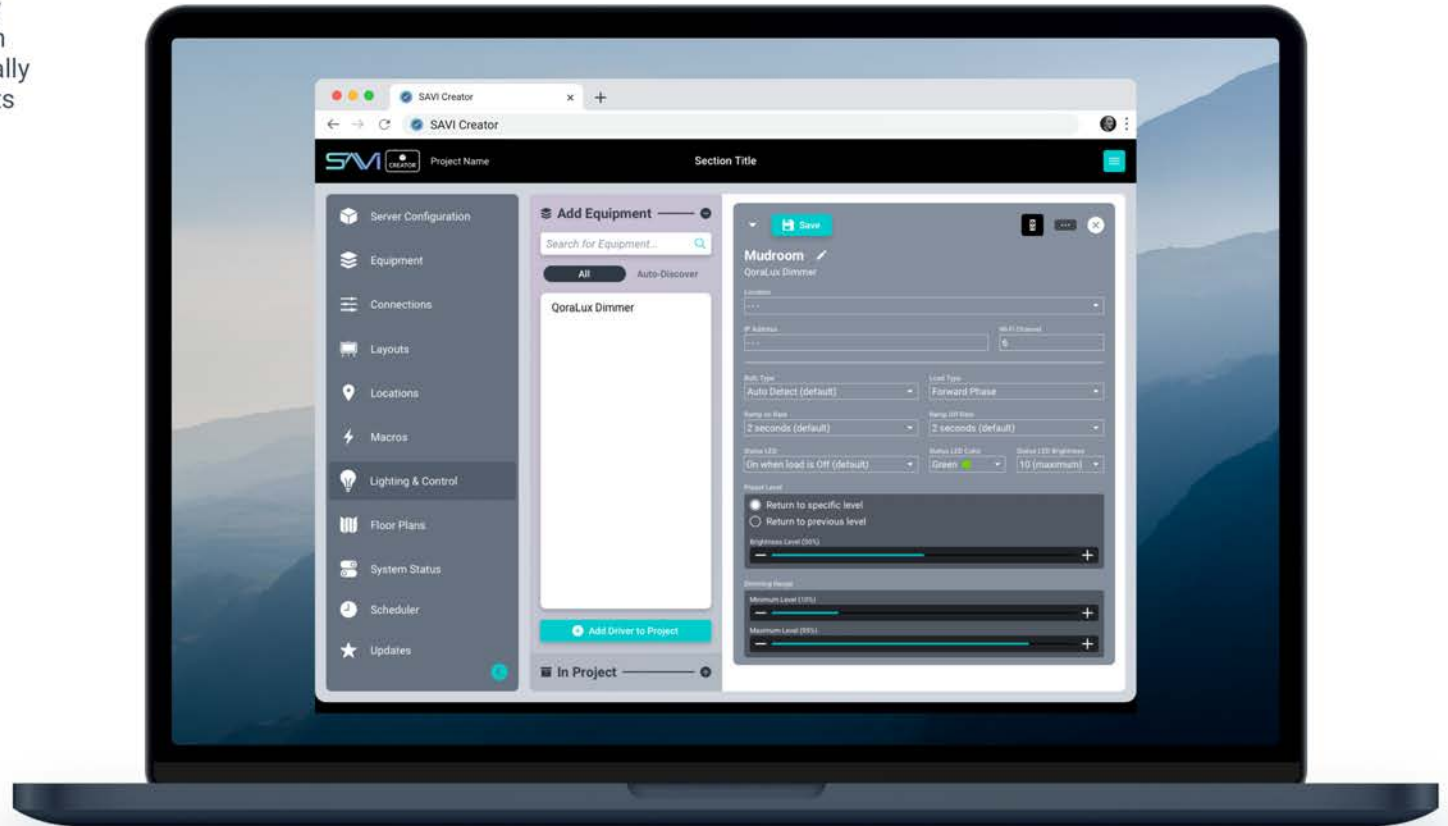
### No Coding Required

Program systems of any scale in just hours.



### Browser-based

Program from any web-enabled device – no software download required.





*“SAVI 3 employs a unique control system that is easy for bars, restaurants, and public facilities to use. Creator streamlines programming and makes it less of a burden for the integrator and end-user.”*

Sean Delph  
Executive Director, Delcom Group



#### Auto-Increment

Eliminate the time-intensive task of manually naming devices and configuring consecutive IP addresses.



#### Live Preview

Get a live video feed from the source directly in Creator, eliminating the need to see the display or use a remote.



#### Instant, Responsive Search

Eliminate endless scrolling with optimized search.



#### Location Tagging

SAVI Creator keeps sources and equipment organized, then automatically creates the end-user experience.



#### Auto-Detect

Quickly identify network connected components in a project and configure 100s of devices in seconds.



#### Firmware Updates

Update your QoraLux drivers, fixtures, and LG webOS displays directly in Creator.



#### Map View

Seamlessly deliver a full-scale map to your customers in seconds by simply uploading a floor plan and dropping in the endpoints you've already programmed.



#### Macros

Create, schedule, and automate tasks for your customers in seconds.



#### System Logs

Dealers can inspect system logs for all events for improved troubleshooting and support.

## SAVI Canvas

# The Display is Your Canvas

With **SAVI Canvas**, one network cable to each display enables content delivery, management, source switching, and control with built-in features for video walls, tiling, ad space, marketing messaging, and video distribution. Now it's remarkably simple to deliver high-impact visual experiences for projects of any size – all without a digital signage platform.



### No Box Behind the Display

Eliminate unnecessary equipment, reduce points of failure, and distribute video to 1000s of devices with no decoder required.



### Custom Layouts

Divide the display with Canvas layouts to show multiple sources on a single screen, including iFrames, live TV, video, custom graphics, and more.



### SAVI Show

End-users can upload and deliver custom content to any display, anytime - no dealer programming, truck rolls, or extra logins required.

Compatible with



## SMV Simplicity

Help end-users reach unrealized profit from their displays using the L-layout to promote specials or sell ad space.



# Canvas Dashboard

## Remote Asset Management

With at-a-glance status of all displays, Canvas Dashboard provides easy remote management, support, and troubleshooting. Manage and monitor health, see exactly what's playing on each display, or pull MAC addresses and warranty information, anywhere, anytime.



### Auto-Detect and Linking Capabilities

Radically simplify troubleshooting and service calls; when a TV goes out or requires service, Canvas auto-detects, auto-links, then reconfigures the new TV with the original settings.

#### Canvas Dashboard Includes:

- Software & Firmware Updates
- Temperatures
- Uptime
- Warranty Information
- MAC Addresses
- Serial Numbers
- Screen Scraped Content
- Dates Added



**SVM** Simplicity

Find comfort in knowing exactly what's playing on all displays, even when you're not there.

## SAVI 3 End-User Interface

# Intuitive Control. Simplified Automation. No Training Required.

With modern design treatments and a host of built-in features, SAVI 3 revolutionizes commercial AV by providing superior functionality and intuitive control across a wide range of devices. SAVI 3 is so consistent and user-friendly, controlling one device is just as easy as controlling thousands and virtually no end-user training is required. Advanced content distribution, custom automation, and full-system management are a simple tap, click, or swipe away.



### Intuitive & Modern

Sleek, approachable, and ultra-responsive, SAVI 3 creates a faster, more intuitive user experience.



### No-Code Built-In Features

Map View, Game View, Facility View, Macros, Scheduler, and more come standard.



### BYOD

Accessible from any web-enabled device with no apps or proprietary hardware required.



### User Rights Management

Assign individual access to rooms, zones, levels, devices, and more.



### No Training Required

So simple to use, your customers can master SAVI in minutes.

## Facility View

# One Touch is All it Takes

Create a crafted customer experience with a single touch, tap, or swipe. Blending seamlessly into daily operations, Facility View provides users with quick, intuitive access, control, and management of all displays, audio zones, lighting, and more.



### Now Playing

Two-way feedback shows the current program, channel name, and channel number, enabling a global view of all displays.



### Macros

Condense any complex, multi-step task into a single tap - open an entire venue or trigger light shows and graphics for events.



### Real-Time Guide & Scheduler

Schedule content up to 4 days in advance, eliminate remotes, and never interrupt the guest experience again.



### Previewer

View a live feed of what's playing to verify channel changes, even if the display is on the other side of the venue.



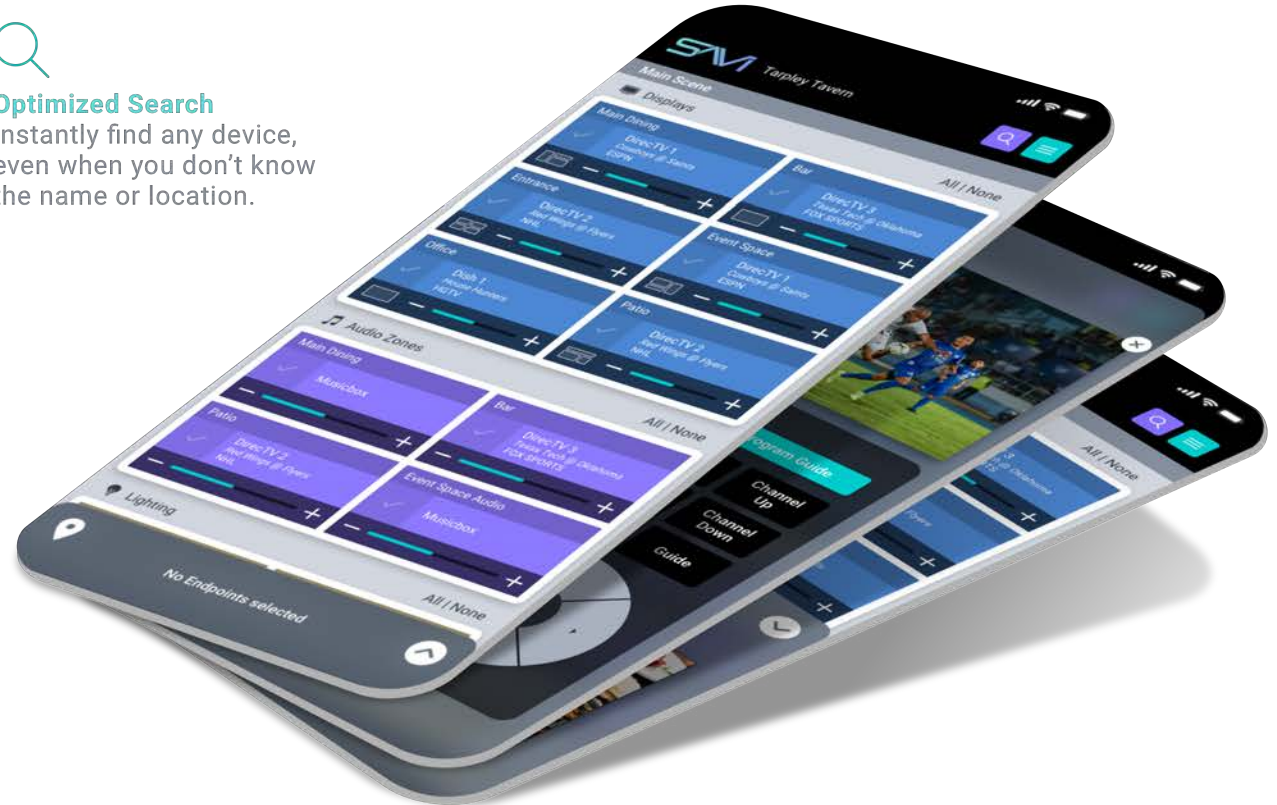
### Optimized Search

Instantly find any device, even when you don't know the name or location.

*"With SAVI's innovative feature set, our customers not only realized significant savings but discovered their potential to draw profit from their AV system."*

**Ryan Sowa**

President and Co-Founder, Just Press Play



## Map View

# Put Your Business on the Map

Map View is a turn-key feature delivering a holistic and nested bird's eye view of your customer's AV system. Perfect for a neighborhood bar or a professional sports stadium with thousands of endpoints, it's never been easier to create, edit, control, and manage a full facility with this visually intuitive, built-in tool.



### Turn-Key

Deliver a full-scale system map to your customers in seconds.



### Nested Organization

Clean, modern, and ultra-responsive maps can be nested and organized by location, room, level, or zone.



### Fast Filter & Search

Control the entire system or search and filter endpoints by audio, video, lighting, sources, and macros.

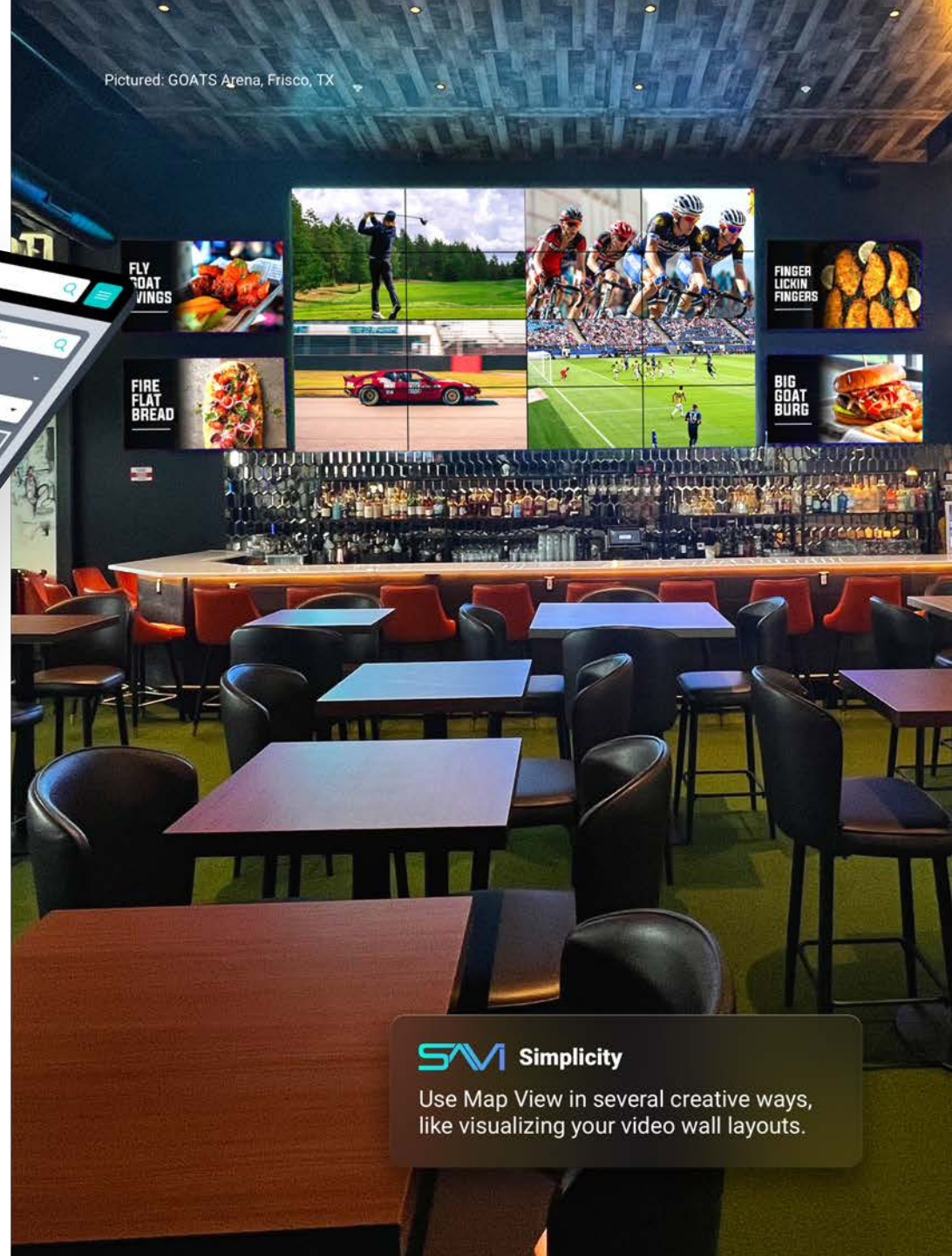


### Advanced Control

Multi-select and multi-edit provide control of volume, lighting, source settings, and more, directly in Map View.



Pictured: GOATS Arena, Frisco, TX



### Quick Find

The dynamic "@" feature pinpoints exactly where sources are distributed, and the adjustable SAVI Preview shows exactly what's playing.



### Choose Your View

Choose to display two-way feedback and metadata for selected endpoints including source, channel, program, and device name.

**SAVI** Simplicity

Use Map View in several creative ways, like visualizing your video wall layouts.

## Game View

# A Game-Changer Come Game Time

Say goodbye to digging through channel line ups and googling game times. Game View aggregates current and future sporting event data into a simple and elegant view, making it easy and fun to fulfill any fan's fantasy, any time.



### Visually Informative

A holistic schedule complete with team logos, colors, and program data.



### Schedule

Pre-plan your week and schedule games up to 4 days in advance.



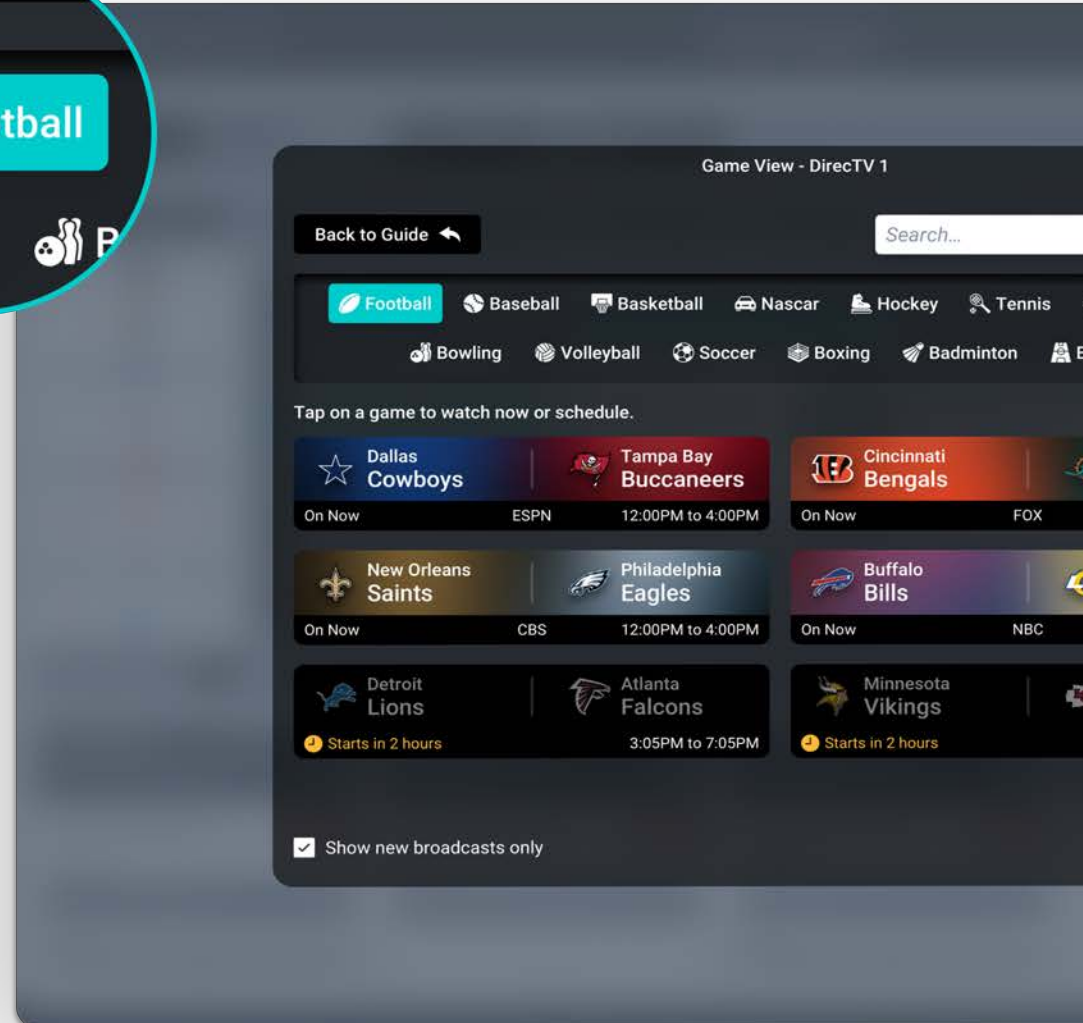
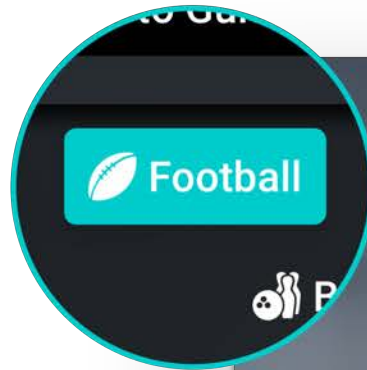
### Search

Search by team to find a game or filter by sport to see all upcoming athletic events at once.



### Now Playing

Game View displays in the Now Playing sidebar for quick recognition and selection.



Pictured: Topgolf, Nashville, TN

Archery Golf

Extreme Tag

Miami Dolphins  
12:00PM to 4:00PM

Los Angeles Rams  
12:00PM to 4:00PM

Kansas City Chiefs  
3:25PM to 7:25PM

Exit

SVM Tarpley Tavern

Main Scene

Displays All | None

Main Dining 1 DirecTV 1 Cowboys @ Saints ESPN	Main Dining 2 DirecTV 1 Cowboys @ Saints ESPN
Bar 1 DirecTV 1 Cowboys @ Saints ESPN	Bar 2 DirecTV 2 Jets @ 49ers NFL
Bar 3 DirecTV 3 Eagles @ Patriots FOX SPORTS	Waiting Area Dish 1 Face Off SYFY

Sources Layouts Volume Lighting

Video

Dallas Cowboys	New Orleans Saints
Philadelphia Eagles	New England Patriots
Los Angeles Chargers	Cleveland Browns

1 Endpoint selected

Dallas Cowboys



SVM Simplicity

Schedule high traffic game days in advance so you never miss a play or a customer request again.

## SAVI Show

# Built-In Content Manager

Simplified at every step, from basic branded signage to custom ad layouts, SAVI Show puts content creation, distribution, and management into the user's hands. Storing custom content, such as logos, menus, specials, slideshows, or ads, SAVI Show allows businesses to deliver personalized content to any display, anytime – eliminating the need for dealers to configure a complicated CMS.



### Dedicated Media Database

Access your library from any device and upload with drag & drop or bulk upload functions.



### Turn Displays into Profits

Now your customers can increase revenue by selling ad space or showing daily specials on their displays.



### Schedule Content

Automate content distribution by pre-scheduling SAVI Show content, such as menu boards or seasonal graphics.

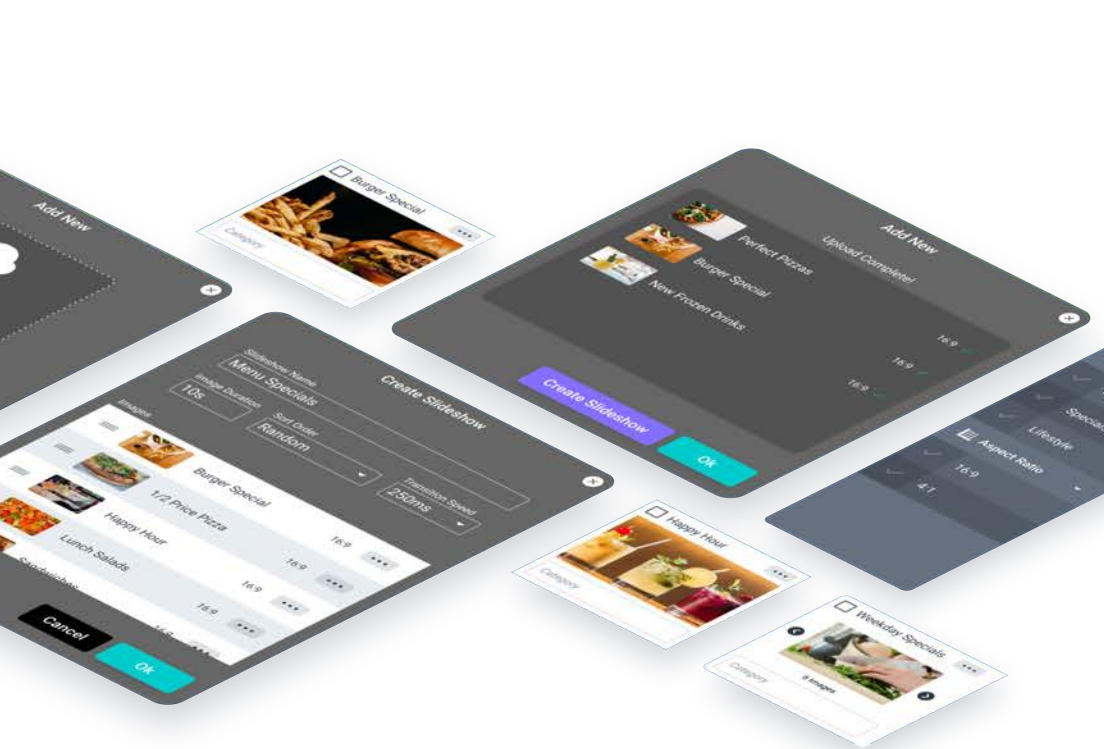


### No Recurring Subscriptions

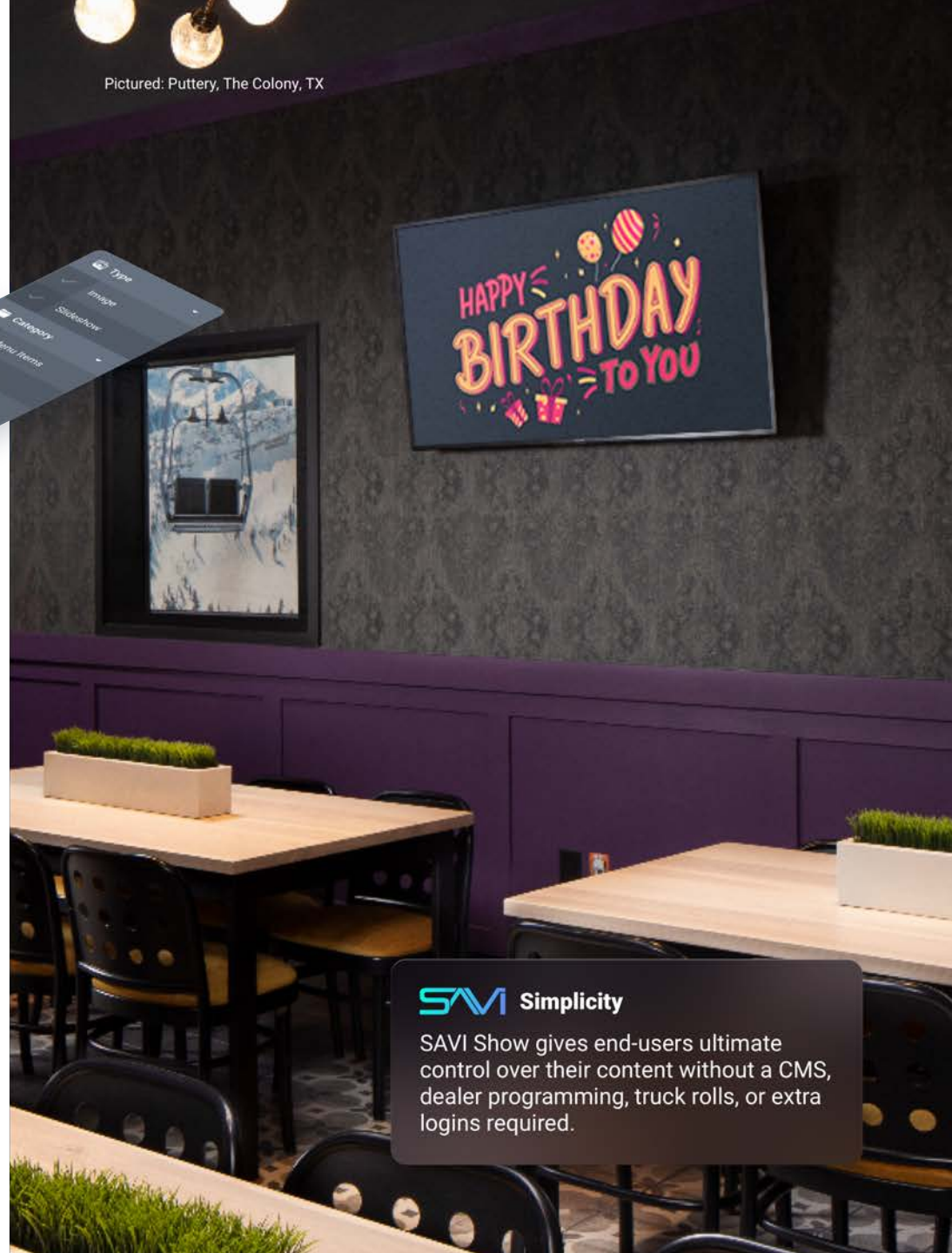
Simple and scalable, with no hidden fees or complex licensing structures.







Pictured: Puttery, The Colony, TX



**Media Matching**

Tap a desired layout region in Facility View and media with matching dimensions will display at the top.



**Auto-Recognize Ratios**

SAVI Show removes the guesswork by recognizing and categorizing files based on aspect ratios fit for Canvas layouts.



**Auto Frame Fill**

Tastefully eliminate the negative space around any content that doesn't fit into a layout region.



**Preview SAVI Show**

View SAVI Show content thumbnails directly in Facility View.

**SAVI Simplicity**  
 SAVI Show gives end-users ultimate control over their content without a CMS, dealer programming, truck rolls, or extra logins required.

# Seamless Integration, Powerful Experiences

Engineered to save integrators and end-users time and money, the **SAVI Hardware Line** eliminates points of failure and streamlines design, cabling, and installation. Deliver reliable, efficient, high-performance, and powerful experiences with flexible and scalable options for commercial projects of any size.



TRINITY FOREST GOLF CLUB



## SAVI Hardware

# Superior Quality and Durability

Proudly designed and assembled in the USA with superior craftsmanship, the SAVI Hardware line features cold rolled steel construction and sleek, durable black powder coating. The SAVI ecosystem offers a comprehensive range of products, from 4K video and HiFi audio to low-voltage light fixtures and customizable control devices, all thoughtfully engineered for seamless integration and optimized to enhance any commercial experience.



### Fully Integrated

The SAVI ecosystem offers efficiency, flexibility, and interoperability with third-party devices.



### Cost-Effective

Eliminate unnecessary cabling, extra boxes, costly platforms, accessories, and licensing fees.



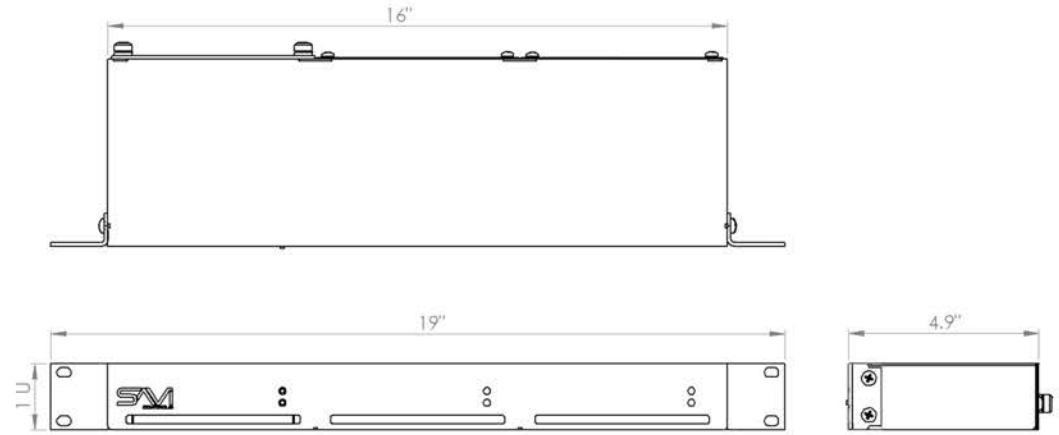
### Trusted System

Over a decade of proven reliability to control 1000s of devices with power and rack space to spare.



### Brilliant Audio & Video

HiFi quality sound and advanced content distribution deliver flawless viewing and listening experiences.



SAVI Server Pro



AMP.One

## Certified Ecosystem Partners



SONANCE

NETGEAR



STREAM.One 4K



DSP.One



Connect I/O

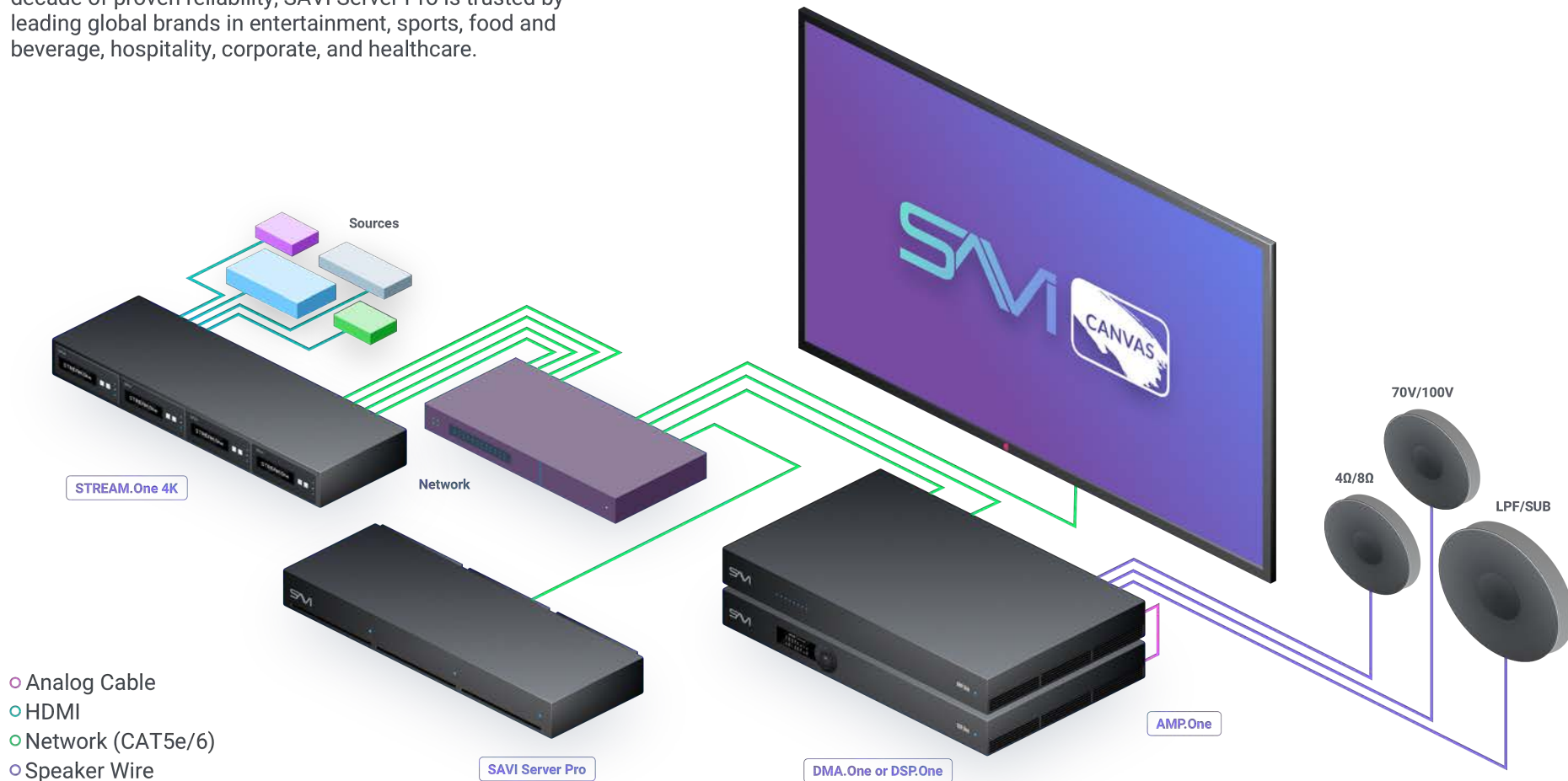
# SAVI Server Pro

## Proven Performance

SAVI Server Pro is the heart of every SAVI automation system with rock-solid performance capable of controlling any project with power to spare. With over a decade of proven reliability, SAVI Server Pro is trusted by leading global brands in entertainment, sports, food and beverage, hospitality, corporate, and healthcare.

*"I have not worked with another system that offers so much yet is intuitive and simple to use."*

**Mark Wells**  
President, Entertainment Systems Inc.





#### AV Over IP

Unlimited scalability and unsurpassed performance.



#### No Software or App Required

Controllable from any web-enabled device.



#### Seamless API Integration

Dramatically simplified integration with SAVI Hardware and third-party products.



#### Only 1U

The modular design leaves space for two additional processors like a Backup Server and lighting control with QORALUX.One.



#### Dedicated Content Storage

Built-in storage space for custom end-user SAVI Show content and slideshows.



#### Annual Support and Maintenance

Included FREE for the first year.



#### Front Panel Reset

Easy troubleshooting and reset button access.



#### Native SAVI 3

The SAVI 3 control and automation system, including Creator, Canvas, SAVI Show, Map View, Game View, and more, comes standard.

#### Key Specifications

- Ethernet 10/100/1000 Mbps LAN port
- Power Consumption 90W
- Power Supply 19V, 65W wall-mount AC-DC power adapter

## STREAM.One 4K

# Dramatically Simplified Installation

**STREAM.One 4K** delivers next-generation video distribution providing H.265 encoding at up to 4K30 – all over a single network cable to each display. Creating a unified viewing experience, STREAM.One 4K also synchronizes a source over multiple displays, eliminating the cost and complexity of video wall design and installation.



### AVoIP Distribution

Make any video source available and simplify system expansion with reliable, over the network distribution.



### Cost-Efficiency & Scalability

The modular design enables flexible scalability and reduces cost with up to 4 STREAM.Ones fitting in a single 1U chassis.



### No Box Behind the Display

Eliminate unnecessary equipment and dramatically reduce points of failure; no box behind the display, HDMI, or IR is required.



### Native SAVI 3 Integration

Seamless integration with SAVI Link and phoenix terminal block providing de-embedded unbalanced audio.



ONLY  
1 CABLE





### Source Sync

Synchronizes a source over multiple displays creating a unified viewing experience.



### Power Over Ethernet

PoE provides clean wiring in every rack and remote power cycle; AC/DC power supply is included.



### HDMI Pass-Through

Eliminates the clutter and expense of additional cables, accessories, and external splitters.



### Custom Splash Screen Image

Auto displays a custom splash screen should the video signal drop.



### Front Panel Configuration

Status LEDs and front panel screen provide at-a-glance information for quick configuration and troubleshooting.



### Individually Encoded Audio & Video

HDMI input encodes audio and video signals into individual PCM audio and separate H.264/H.265 streams.



### Auto Discover

Automatically discovers devices and saves time in the initial setup of multiple units.

### Key Specifications

- H.265 4K30
- Ethernet 10/100/1000 Mbps
- Audio 0 – 1500ms Delay for Video Sync
- PoE 5000mW
- Max 15 Mbps
- 4K main stream + 1080p secondary stream

## Connect I/O

# Perfect Harmony & Interoperability

**Connect I/O** controls virtually any non-IP-enabled device in your SAVI 3 system.



### Legacy Device Control

Legacy IR and RS-232 device control via IP.



### IR commands

Learn IR commands to integrate IR-enabled devices easily.



### IR and RS-232 Database

Easily add devices with SAVI's vast database of IR and RS-232 codes.



### Convert IR Ports

Using optional Contact Closure Sensors, convert IR ports or emitters.

### Key Specifications

- 4x RS-232 modules
- 9x IR outputs
- 6x Relays
- Max voltage: 250VAC/30VDC
- 19" rack mount with included ears



# SAVI Thermostat

## Advanced Environment Control

SAVI Thermostat provides quick and reliable HVAC integration for commercial environments.



### 2-Stage Heating and Cooling

Integrate with gas or electric, heat pump, or hydronic systems.



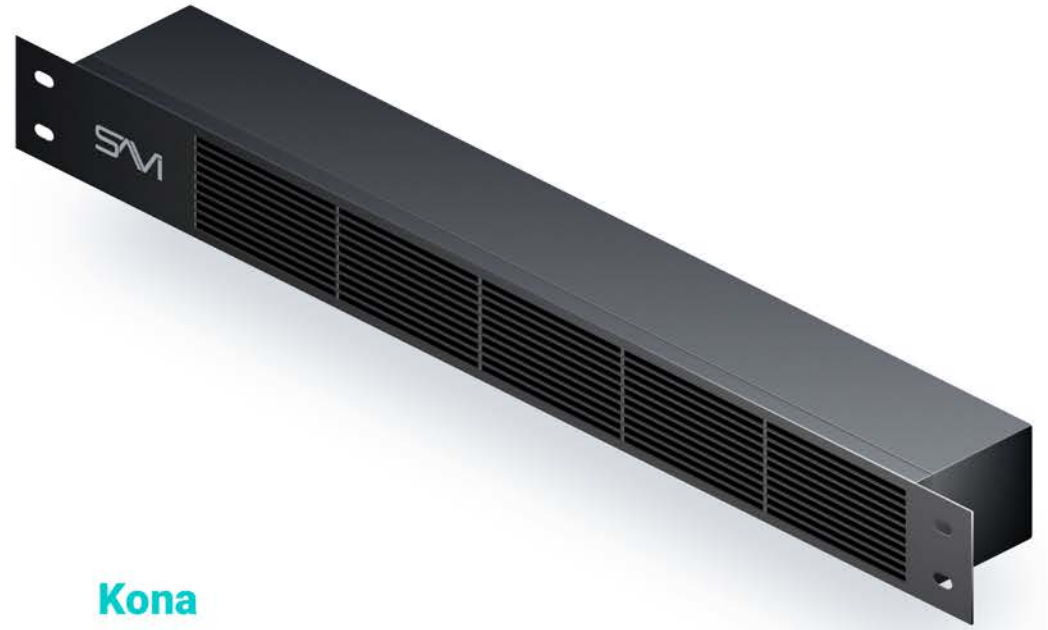
### Feature-Rich

Up to a 4-hour override, non-volatile memory, and keypad lock.



### Key Specifications

- Title 24 compliant
- Pre-occupancy fan purge
- Dry contact input
- FDD (Equipment Fault Protection) notification
- Compatible with condensate overflow warning systems



## Kona

# Reliable Equipment Cooling

**Kona** keeps all your critical gear in the rack cool, increasing the reliability and longevity of your hardware. The Kona draws in air from the front and pushes it out the back, using a pre-mounted fan core on vibration isolators for the ultimate quiet cooling experience in a 1U chassis.



### 20-CFM

Provides constant, controlled airflow.



### 20 dBA

A quiet cooling experience.

# Unprecedented HiFi Audio Quality for Commercial Applications

The **SAVI Audio** product line, featuring ICEpower® amplification modules, brings unmatched HiFi quality sound to commercial installations. With SAVI Audio, integrators of all skill levels can design, program, and install rich and complex audio experiences at a fraction of the time and cost. Engineered for unlimited scalability, flexible options, and seamless integration, SAVI Audio will make you forget everything you've heard before.



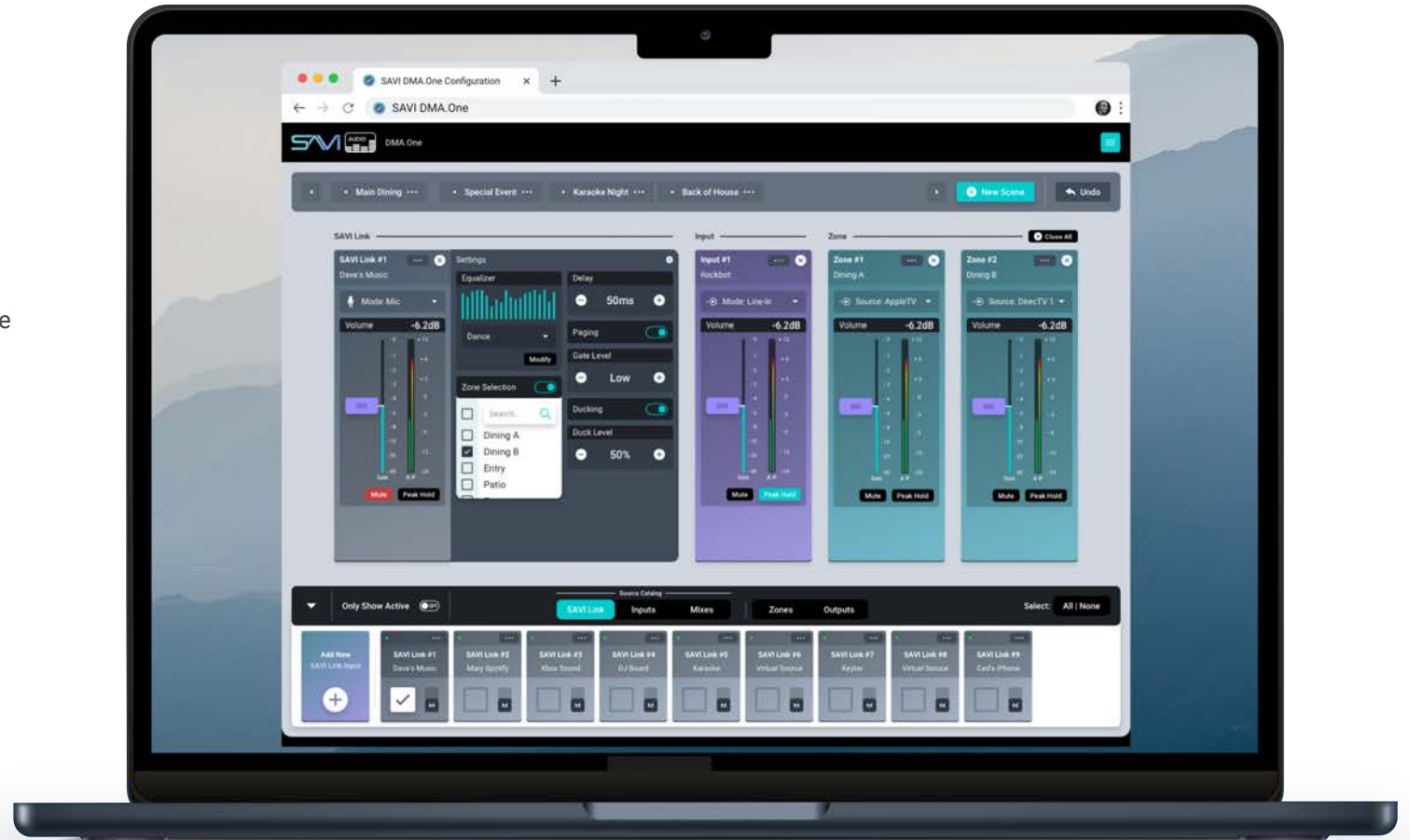


# SAVI Audio User Interface

## Brilliant Sound Without Complex Configuration

The wholly reimagined and revolutionary **SAVI Audio Configuration User Interface** is sleek, intuitive, and dramatically simplifies audio programming. By eliminating unnecessary clutter, techs of all levels can now configure complex audio installations in only minutes.

Customize the interface by selecting only the inputs, mixes, zones, and outputs you want to adjust or compare. Save time with features like pre-configured scenes, matrix-mode toggle, auto-discover, source renaming, SAVI Link, and more. With SAVI Audio's configuration UI, delivering HiFi audio quality to commercial projects is not only simple but remarkably cost-effective.



## SAVI Link

# Immersive Audio Over IP

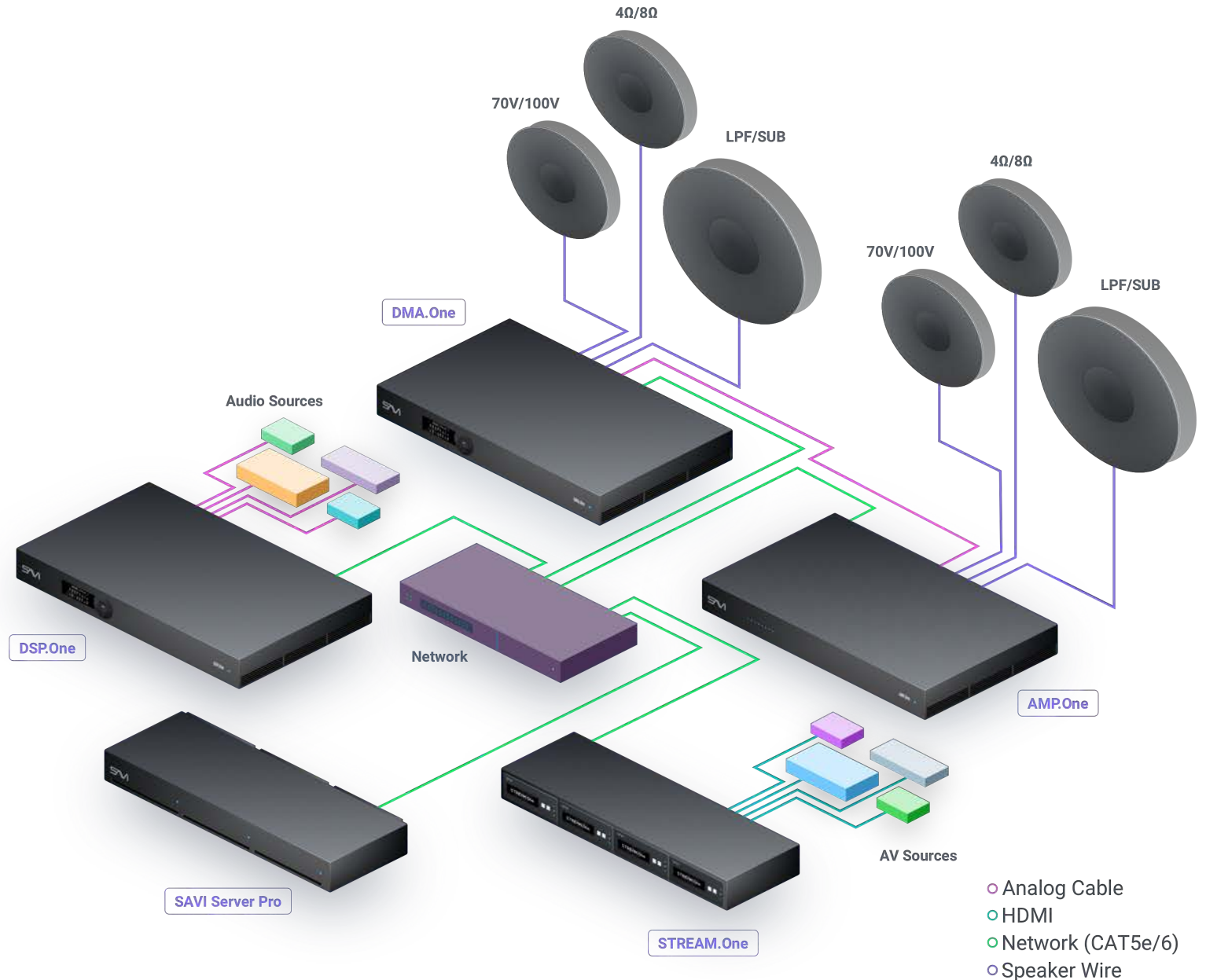
SAVI Audio features **SAVI Link**, a standards-based audio over IP system designed to eliminate license management software, simplify installation, and streamline control of AV systems for commercial venues.

SAVI Link features automatic device discovery and intuitive signal paths for interoperability with a variety of AES67 enabled devices. Combine unlimited sources over the network and leave your interconnects in the truck.



### Convert Physical Sources to Virtual Sources

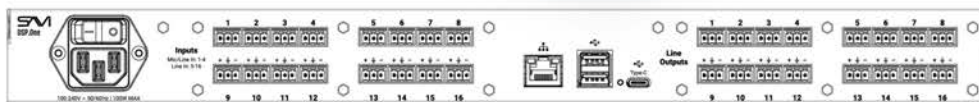
SAVI Link converts physical sources to virtual sources, making them available to the DSP.One and DMA.One over the network.



## DSP.One

# Unlimited Scalability & Reduced Cost

The versatile **DSP.One** is the core of every SAVI audio system and makes system expansion simple with no licensing or additional software required. Feature-rich, with a reimagined configuration user interface, SAVI Link, matrix mixer, and physical 16 x16 I/O, DSP.One enables integrators of all skill levels to design, program, and install complex audio experiences at a fraction of the time and cost.



### No Mixer or Additional Hardware Required

Supports up to 16 mixes with any combination of sources, including SAVI Link, inputs, and mics.



### SAVI Link

Standards-based audio over IP system that combines all sources over the network, simplifying installation and eliminating license management.



### Harmonious Integration

Simplified over the network integration to work in harmony with STREAM.One.



### Avoid Extra Licensing Fees

Connect multiple DSPs and add unlimited virtual inputs while avoiding additional commercial licensing fees.

### Key Specifications

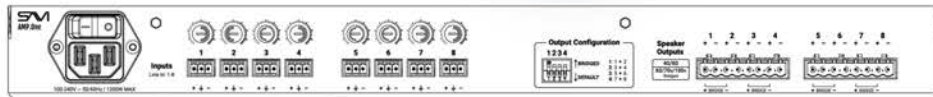
- 16 inputs and outputs
- 8 configurable mics
- 3-pos 3.5mm euroblock
- 10 Band Parametric EQ
- SAVI Link channels AES67, SDP, RTP, UDP, or RTSP



## AMP.One

# Unmatched Power

With unmatched power in a minimalist design, **AMP.One** offers 2400 watts of ICEpower®, delivering rich audio and flexible global input in a sleek 1U chassis. This smart amp is multi-functional, with IP volume control, health monitoring, and the versatility to manage a variety of use cases, including 8Ω, 4Ω, 70V, 100V, and LPF.



### Time-Efficient Installation

Designed to eliminate unnecessary devices and wires in a project while reducing installation time and inventory challenges.



### ICEpower® Modules

Eight zones of flexible amplification ICEpower® modules to provide a solution entirely unique for 70V audio amps.



### Remote, Smart Control

Over the network volume control and health status monitoring for convenient device management.



### 8Ω, 4Ω, 70V, 100V and LPF

Engineered to manage a variety of use cases for multi-functional versatility, it's the only amp you'll ever need.



### Flexible Power Provisioning

2400 configurable watts in a convenient 1U design.



### Any Speaker, Any Time

Selectable stereo or mono output per zone ensures AMP.One works with virtually any speaker.

### Compatible with



4Ω/8Ω 70V/100V LPF/SUB

### Key Specifications\*

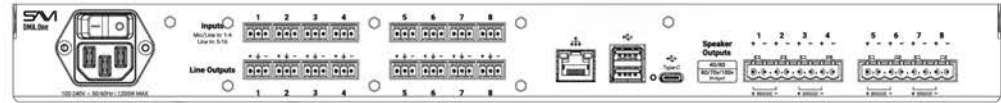
- 150-watt x 8ch @ 8Ω
- 300-watt x 8ch @ 4Ω
- 600-watt x 4ch @ 8Ω (bridged)
- 600-watt x 4ch @ 70/100V (bridged)

\* Some features & specifications subject to change.

## DMA.One

# HiFi Quality & Endless Versatility

**DMA.One** combines all the features and versatility of DSP.One and AMP.One with ICEpower® module amplification outputs and 2400 watts in an industry-first 1U chassis.



### No External Mixer Required

Supports up to 16 mixes with any combination of sources, including SAVI Link, inputs, and mics.



### ICEpower Modules®

Eight zones of flexible amplification ICEpower® modules to provide a solution entirely unique for 70V audio amps.



### SAVI Link

Standards-based audio over IP system that combines all sources over the network, simplifying installation and eliminating license management.



### 2400 Configurable Watts in 1U

Featuring 2400 watts with 16-line level inputs in an industry-first 1U chassis. For 8Ω/4Ω and 70V/100V installations.



### Versatile Analog and IP Audio Distribution

Delivers widespread pro audio distribution over a single network cable, making configuration simple and quick for a variety of applications from MDF to IDF and campus installations.

### Compatible with



4Ω/8Ω 70V/100V LPF/SUB

### Key Specifications\*

- 150-watt x 8ch @ 8Ω
- 300-watt x 8ch @ 4Ω
- 600-watt x 4ch @ 8Ω (bridged)
- 600-watt x 4ch @ 70/100V (bridged)

\* Some features & specifications subject to change.

Pictured: Topgolf, Nashville, TN



*“This is a game-changer for the experience at Topgolf venues. The SAVI platform will enable Topgolf to meet business goals while also achieving high standards of performance and aesthetics.”*

**Andrew Macaulay**  
Chief Technology Officer, Topgolf



# Simply Brilliant Lighting Solutions

Ushering in a new era of powerful and versatile lighting experiences, **QoraLux** delivers simplified lighting installation, integration, and control, unlocking new opportunities and revenue streams for commercial dealers.

QoraLux eliminates over-complicated project specification, time-intensive programming, and cumbersome installation; whether you're integrating an existing lighting design or leveraging the profitability of low-voltage solutions, QoraLux offers the freedom and flexibility to transform any commercial space into a brilliant and engaging lighting experience.





**SVM** Simplicity

Remove manual lighting adjustments and effortlessly switch between day and nighttime dining in seconds with QoraLux.

# QoraLux High-Voltage Series

## Effortless Lighting Integration

The **QoraLux High-Voltage** series is revolutionizing the lighting integration and control experience with a range of simplified commercial-rated keypads, switches, dimmers, and outlets. Transforming traditionally complex projects with a flick of a switch, integrators can finally offer enhanced and automated commercial lighting control in a fraction of the time and cost.



### Simplified Programming & Installation

With native SAVI 3 integration, Creator auto-detects QoraLux keypads, dimmers, switches, and outlets on the network, making integration quick and effortless.



### Commercial-Rated Configurable Control

Integrate, control, and automate high-voltage lighting systems without complicated hardware, panels, or devices to install.



### Cost-Effective, Time Efficient

Deliver optimized control to end-users in less time and at a lower cost than leading competitors.



### Seamless Interoperability

Streamlined integration with occupancy sensors, photocells, timers, and astronomical clocks.



### Revenue Generating

Unlock new opportunities and win more bids by offering integrated lighting control you can install at a fraction of the cost of other solutions.



### Full Spectrum Color

Create elegant and engaging lighting designs with a full spectrum of customizable color temperatures and variable whites.

## Smart Outlet



### Power

- 15A General
- 15A Magnetic
- 5A LED/CFL
- 1800W Incandescent/Halogen

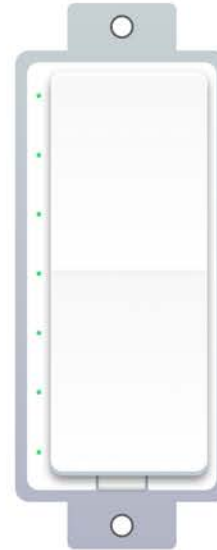
## Smart Switch



### Max Rating

- 960W Incandescent (120V)
- 1385W Incandescent (277VAC)

## Smart Dimmer



### Max Rating

- 600W Incandescent @120/277V
- 300W CFL, LED@120/277V
- 300W ELV, MLV@120V
- 200W ELV, MLV@277V
- Also available in 0-10V

## 6-Button Keypad



### Key Specifications

- 6 Configurable Buttons
- Auto Configuration
- Adaptive Controls for lighting, music, and video
- Also available with local load control

# QoraLux Low-Voltage Series

## Find Your Best Light

The **QoraLux Low-Voltage** series delivers a streamlined lighting solution to commercial applications with energy-efficient and cost-effective drivers and fixtures. Featuring a full spectrum of customizable colors or variable whites, integrators can design and install dynamic and vibrant lighting experiences at dramatically reduced costs.



### Simplified Programming & Installation

With native SAVI 3 integration, Creator auto-detects drivers and fixtures on the network, making integration quick and effortless.



### Cost-Effective

Fewer circuits, less wire, conduit, and labor make low-voltage systems the most cost-effective commercial lighting solution available.



### Compounded Energy-Efficient Savings

Low-voltage power distribution is far more efficient than converting power from AC to DC at every fixture.

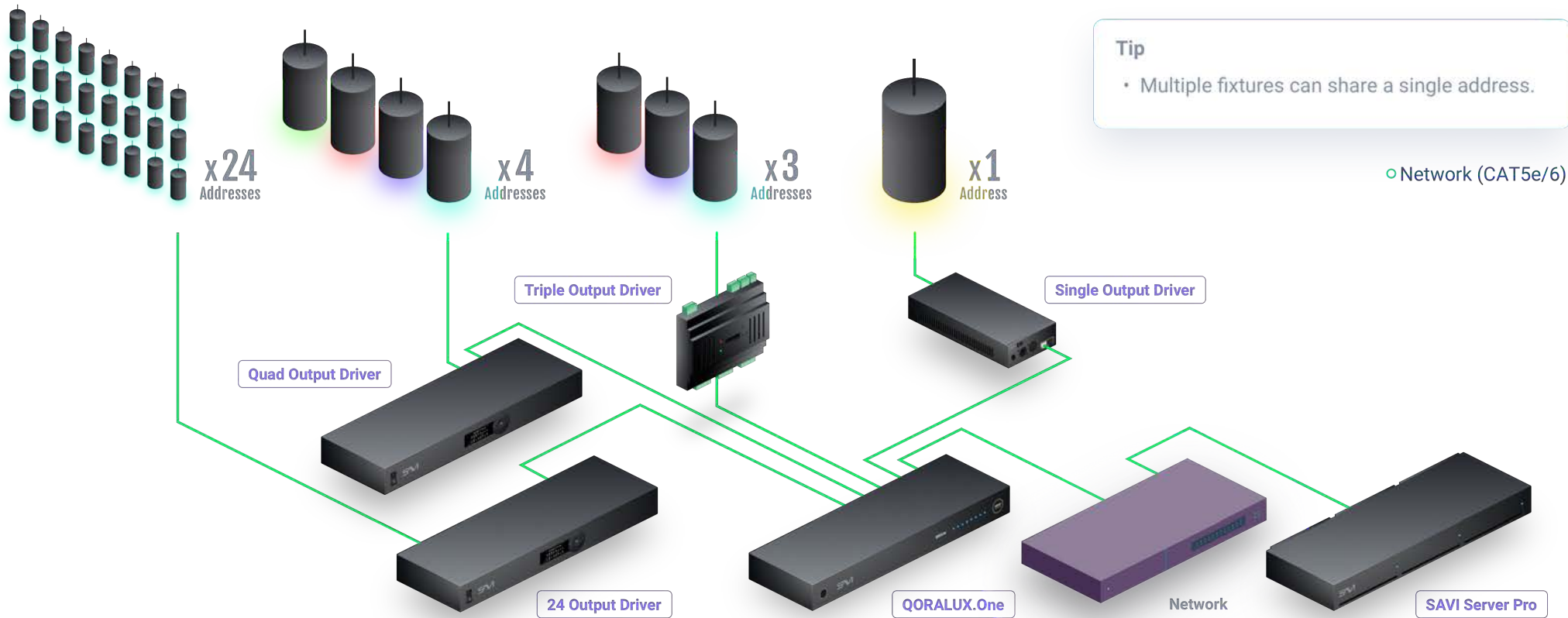


### Revenue Generating

Unlock new revenue streams and amplify your sales by integrating low-voltage drivers and fixtures.







**Tip**

- Multiple fixtures can share a single address.

○ Network (CAT5e/6)



**Intelligent Power Distribution**

1, 3, 4, or 24 output drivers for an all-in-one intelligent power solution.



**Intuitive & Dynamic Scenes**

So easy to master, end-users can create lighting scenes without calling their dealer.



**Seamless Interoperability**

Streamlined integration with occupancy sensors, photocells, timers, and astronomical clocks.



**Driverless Fixtures**

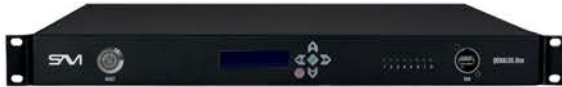
Eliminate the #1 source of fixture failures by removing the onboard drivers.



**Full Spectrum Color**

Create elegant and engaging lighting designs with a full spectrum of customizable color temperatures and variable whites.

# QORALUX.One



### Key Specifications

- Sleek, 1U design
- Control up to 1024 lighting zones at once
- 40 watts @ 120V AC
- 6-button front panel for offline configuration
- Native SAVI 3 integration
- Over the network control

# Drivers



### Key Specifications

- 1 Output @ 96W Total Driver
- 3 Outputs @ 288W Total (96W Per Output) Panelized DIN Rail Driver and Power Supply
- 4 Outputs @ 384W Total (96W Per Output) Driver
- 24 Outputs @ 480W Total (20W Per Output) Driver

## Fixtures



### Available In

- 6" (20w) or 15" (96w) RGBW Pendants
- 4" (20w) RGBW Sconce
- 4" (20w), 6" (19w), or 8" (30w) RGBW Recessed
- 4" (30w) Outdoor Pathway RGBW Directional
- 3" (9w) or 4"(10w) Indoor/ Outdoor RGBW
- Horizontal and Vertical Flex or Stealth Flex Strips

## Dynamic Room Control

# Introducing: TOUCHPAD.One

### Full-HD Capacitive Touchscreen

TOUCHPAD.One is beautifully engineered for longevity, featuring a 5.5" high-definition capacitive IPS touch screen made with Corning Gorilla Glass. TOUCHPAD.One delivers a crystal-clear display that lasts.

### Native SAVI 3 Integration

The perfect addition to any modern office, restaurant, or entertainment venue, TOUCHPAD.One seamlessly integrates with the SAVI 3 system with native features, including auto-configure, SAVI Show, and room scheduling.

### Power over Ethernet

Powered and controlled via a single network cable, TOUCHPAD.One streamlines installation by eliminating the need for secondary wiring.



A high-angle, wide shot of a large indoor arena, likely a basketball stadium, filled with spectators. The arena is brightly lit, with a large screen on the right side displaying a basketball game. The crowd is dense, and the atmosphere appears to be that of a major sporting event. The text "One Solution for Every Market" is overlaid on the left side of the image.

# One Solution for Every Market

**SAVI 3** is the only simple solution in the AV market powerful enough for any application. Thousands of integrators, brands, end-users, and their customers have already experienced the power of SAVI 3 and the future of AV – have you?



Pictured: Mall of Asia Arena, Bay City, Pasay, Philippines

Pictured: Momofuku, Las Vegas, NV

## Market Solutions

# Powerful Enough for Every Application

 **TOPGOLF**



**GameStop**



Bars & Restaurants



Cultural/Event Centers



Stadiums & Arenas



Multi-Dwelling Units



Hotels & Hospitality



Education



Entertainment Venues



Corporate Offices



Transportation



Houses of Worship



Government/Military



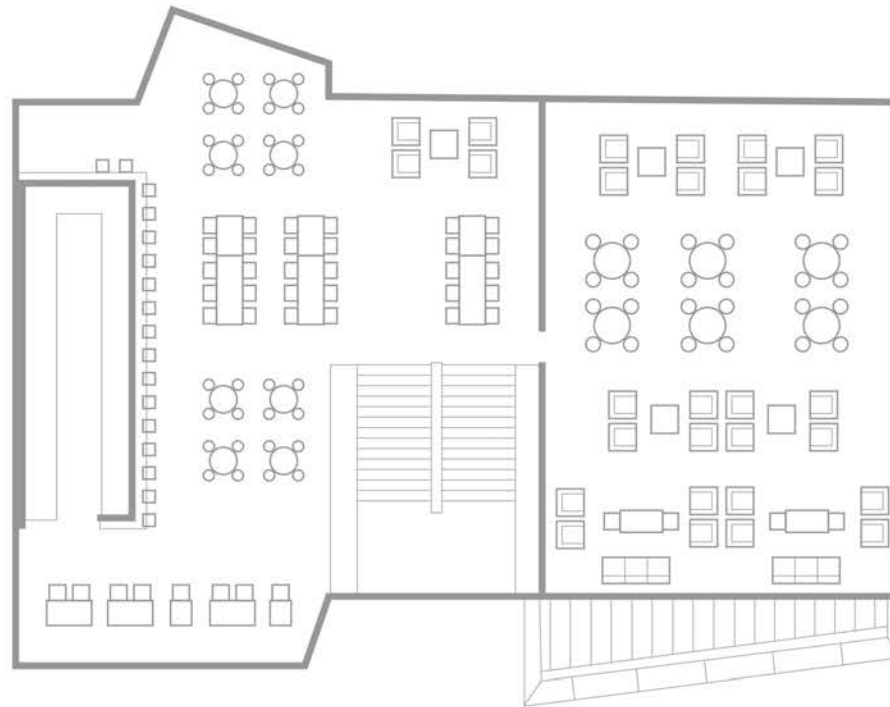
Retail Stores





## Elevate Your Brand Restaurants & Bars

Enhance your brand identity and create an immersive atmosphere using SAVI Canvas. With built-in features for videos walls, tiling, ads, marketing, video, and more, content delivery, control, and management has never been easier.



65x LG WebOS Displays



8x 8Ω Sonance Speaker



16x 70V Sonance Speaker



16x Sources



4x Point of Sale



9x Cameras



3x NETGEAR Network Switch



45x QoraLux Pendant Light



1x QORALUX.One



1x QoraLux 24 Output Driver



1x SAVI Server Pro



16x SAVI STREAM.One



1x SAVI Connect



1x SAVI AMP.One



1x SAVI DMA.One



4x SAVI KONA

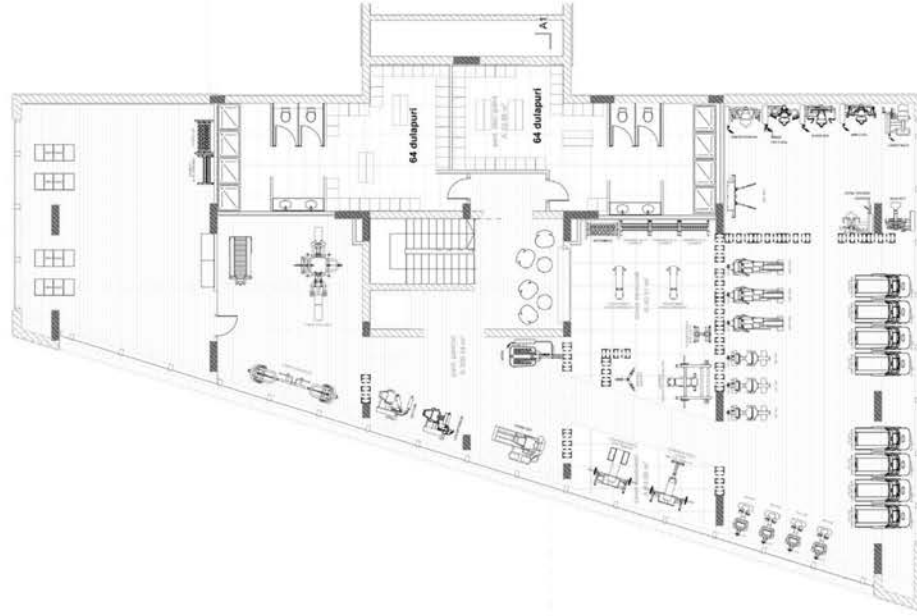


3x SAVI Thermostat

## Transformative AV

# Gyms & Fitness Centers

Inspire fitness gurus and gym novices with purpose-built rooms for spin classes, group sessions, weight training, and more by integrating audio, video, lighting, temperature control, and digital signage.



**76x LG WebOS Displays**  
(24) Individual displays,  
(4) 2x2 video walls, (4) 3x3 video walls



**10x 8Ω Sonance Speaker**  
8 full range, 2 sub



**42x 70V Sonance Speaker**



**16x Sources**



**4x Point of Sale**



**45x Cameras**



**4x NETGEAR Network Switch**



**60x QoraLux Pendant Light**



**1x QORALUX.0ne**



**1x QoraLux 24 Output Driver**



**1x SAVI Server Pro**



**16x SAVI STREAM.0ne**



**1x SAVI Connect**



**1x SAVI DSP.0ne**



**1x SAVI AMP.0ne**



**1x SAVI DMA.0ne**



**4x SAVI KONA**

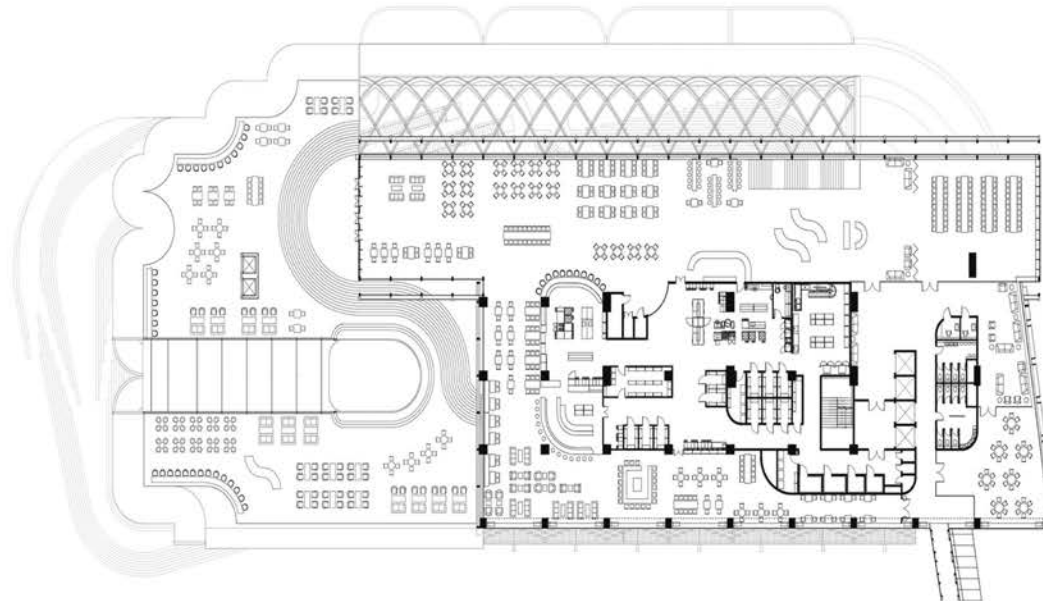


**10x SAVI Thermostat**



## Unforgettable Experiences Entertainment Venues

Create unforgettable experiences with a reliable system capable of controlling 1000s of devices.



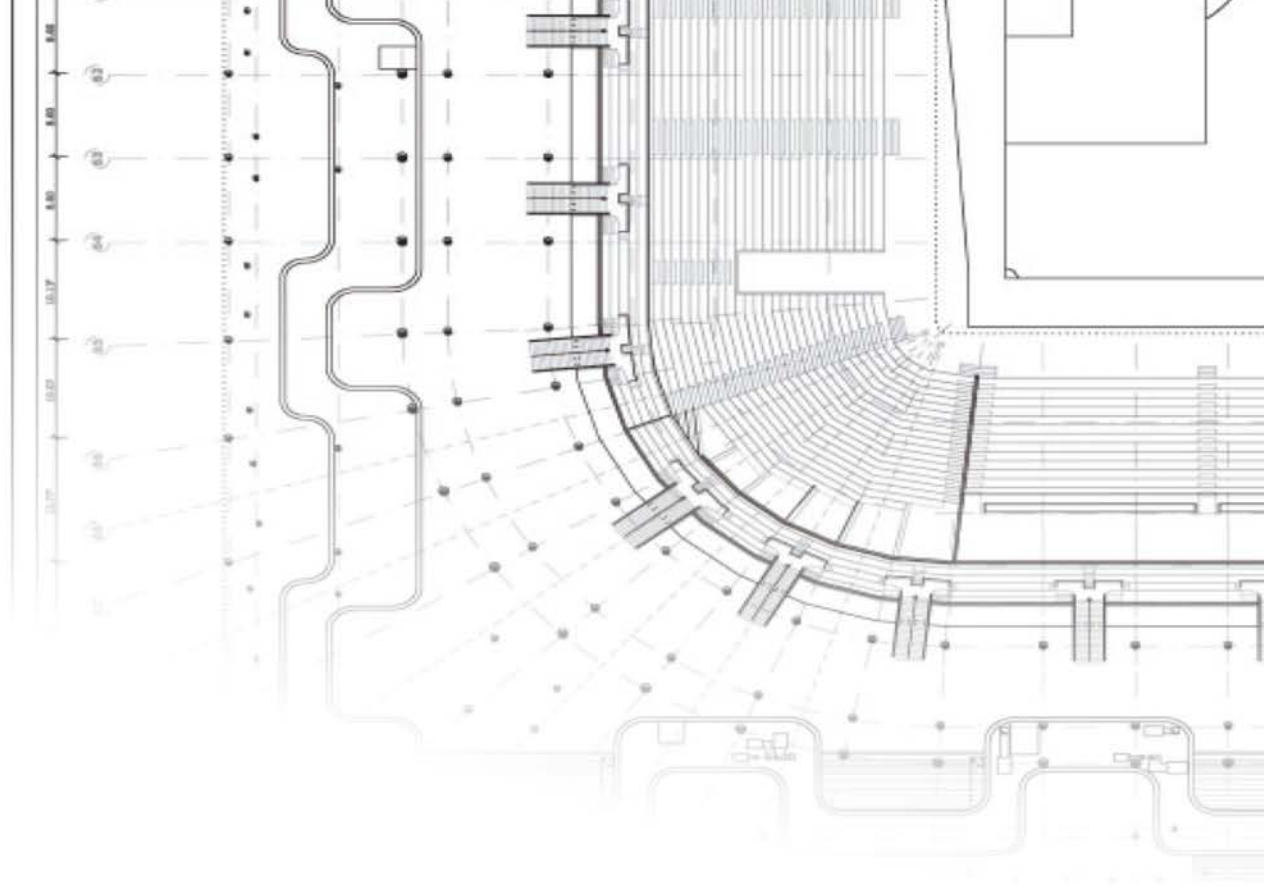
- |   |   |   |
|---|---|---|
|  105x LG WebOS Displays    |  5x NETGEAR Network Switch                                 |  1x SAVI Connect       |
|  27x 8Ω Sonance Speaker    |  265x QoraLux Pendant Light                                |  1x SAVI DSP.One       |
|  100x 70V Sonance Speaker |  1x QORALUX.One   |  6x SAVI AMP.One      |
|  24x Sources             |  3x QoraLux 24 Output Driver                             |  1x SAVI DMA.One     |
|  12x Point of Sale       |  2x SAVI Server Pro<br>production server + backup server |  7x SAVI Kona        |
|  65x Cameras             |  28x SAVI STREAM.One                                     |  14x SAVI Thermostat |



## Create Lifelong Fans

# Stadiums & Arenas

Deliver multi-viewing, impactful AV experiences for professional sports games, concerts, and conventions by managing and distributing custom content to 1000s of devices from any web-enabled device.



750x LG WebOS Displays



4x Direct View Video Wall



24x Sources



60x 8  $\Omega$  Sonance Speaker



1200x 70V Sonance Speaker



520x Cameras



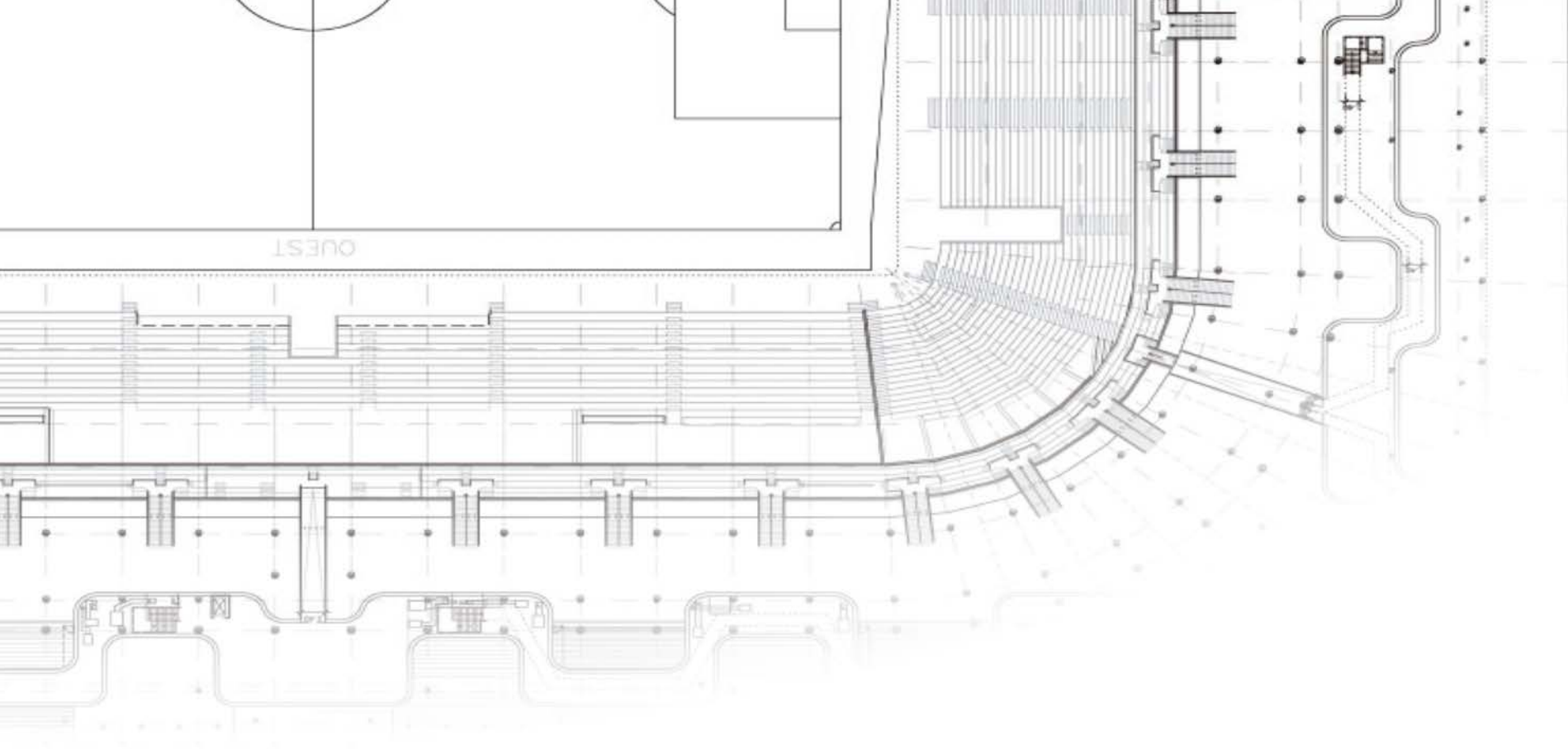
75x Point of Sale



60x NETGEAR Network Switch



1x Pro:Idiom Server



 200x Lighting Zones

 2x QORALUX.One

 9x QoraLux 24 Output Driver

 4x Video Wall Processor

 4x SAVI Server Pro

 24x SAVI STREAM.One

 2x SAVI Connect I/O

 6x SAVI Kona

 4x SAVI DSP.One

 35x SAVI DMA.One

 20x High-Power Third-party amps

## Get Certified

# State-of-the-Art Training Center

Get SAVI 3 Certified in our brand-new, state-of-the-art training facility. Each student will receive personalized attention and hands-on experience with their own rack while learning to configure an entire SAVI system and seeing changes in real time.



Programming with SAVI Creator



SAVI Audio Configuration and Design



Display Management, Audio and Lighting Zones



Practice Projects



Hardware Configuration and Integration



QoraLux High-Voltage and Low-Voltage Programming and Design



Network Design



**Certified Ecosystem Partner Breakout Sessions** with LG, Sonance, and NETGEAR.



Video Distribution & Digital Signage with SAVI Canvas



User Interface and User Experience



Third-party Integration and Drivers



**Final Exam:** All students build a functional, stadium-sized system, complete with displays, signage, audio zones, and lighting.

*“Man, I can’t speak highly enough on this training. It was super cool, and very informative. My favorite part was feeling like a master programmer.”*

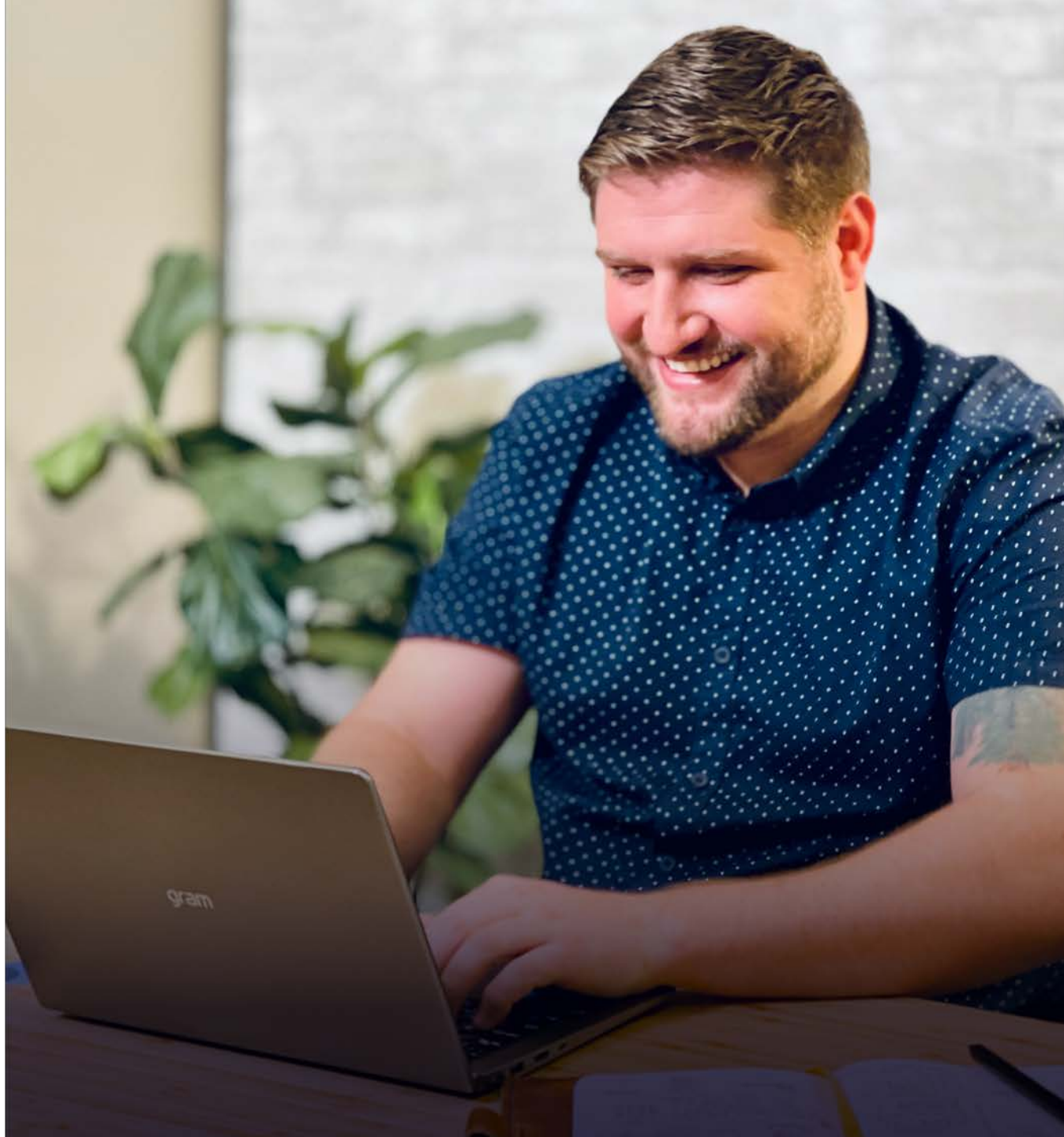
**Paul Simpson**  
*Domes Audio Video Environments*

*“This has been the best training class I have taken. I appreciate the amount of material covered, it really made the information sink in being able to run so many drills with the equipment.”*

**Sam Welchel**  
*Ford Audio-Video*

*“This was the best product training I have ever done, hands down. I can honestly say, I’d buy this product, not just because it’s powerful and well designed, but because I know I can use it.”*

**Anthony Nardini**  
*All Tech Integration*



# About SAVI

## Hello Simplicity.

As former commercial AV integrators, we spent years in the industry frustrated by the overly complex and ridiculously expensive solutions on the market. Programming even the smallest venue took weeks or months to complete; installation was complicated and time consuming with endless cables and points of failure. Hardware was unreliable, and end-user training was extensive and cumbersome.

### **That changed in 2011.**

Driven by the belief that technology should make life easier, while recognizing the untapped potential AV had to drive profit for businesses, we started SAVI: a customer-focused company with the mission to radically improve the commercial AV industry for integrators and end-users by delivering advanced features, intuitive tools, and unmatched audiovisual experiences to everyone.

We spent the next decade listening; developing, testing, and evolving our platform with the goal to deliver a dramatically simplified, yet incredibly powerful solution. We wanted to empower integrators with the freedom and flexibility to create unforgettable experiences for their customers in a fraction of the time and cost.

In 2020, we launched SAVI 3, the only highly sophisticated, cost-efficient commercial AV control, management, and automation solution that's simple enough to program in hours, intuitive enough to learn in seconds, and powerful enough for every application. With SAVI 3, we've revolutionized commercial AV.

### **And we're just getting started.**





*With SAVI, dealers can offer powerful solutions to their customers without compromising time, cost, or quality. We're committed to delivering next-gen AV experiences with groundbreaking simplicity, so you can focus your energy where it's needed most: growing a thriving business.*

**John Dorsey**  
Founder and CEO









[www.hellosavi.com](http://www.hellosavi.com)



DIGITAL DOWNLOAD