



IP66-rated **QoraLux Pathway 4"** is a bold and elegant approach to exterior applications, offering radiant RGB color mixing and 4160 K tunable white . Pathway 4" can be customized to suit a wide range of lighting needs, including building exteriors, pathways, and landscaping with a range of mounting accessories available.

KEY BENEFITS

- Simplified installation with Class 2 low-voltage wiring
- Create vibrant lighting scenes with RGB color mixing and 4160 K tunable white
- IP66-rated and suitable for interior or exterior installations
- Compounded energy-efficient savings with low-voltage power distribution
- Reduced failure rate with driverless fixtures
- Compatible with all QoraLux drivers
- 4.72 in with 30 W max power

SPECIFICATIONS

Control, Monitoring, and Network	
Control	DMX 512 (when using QoraLux driver)
DMX modes	4 channel mode: R, G, B, TW 7 channel mode: Dimmer, R, G, B, TW, strobe, macro

Lighting	
Color temperature	Tunable white, 4160 K
CRI (tunable white)	85
Each LED wattage	4
LED quantity	7
LED type	30 W
Lens angle	29°
Lumen	1097 @full

Electrical

Connection	5 conductor cable
Drive method	Constant voltage
Power input	24 VDC
Total max power	30 W

Mechanical/Environmental

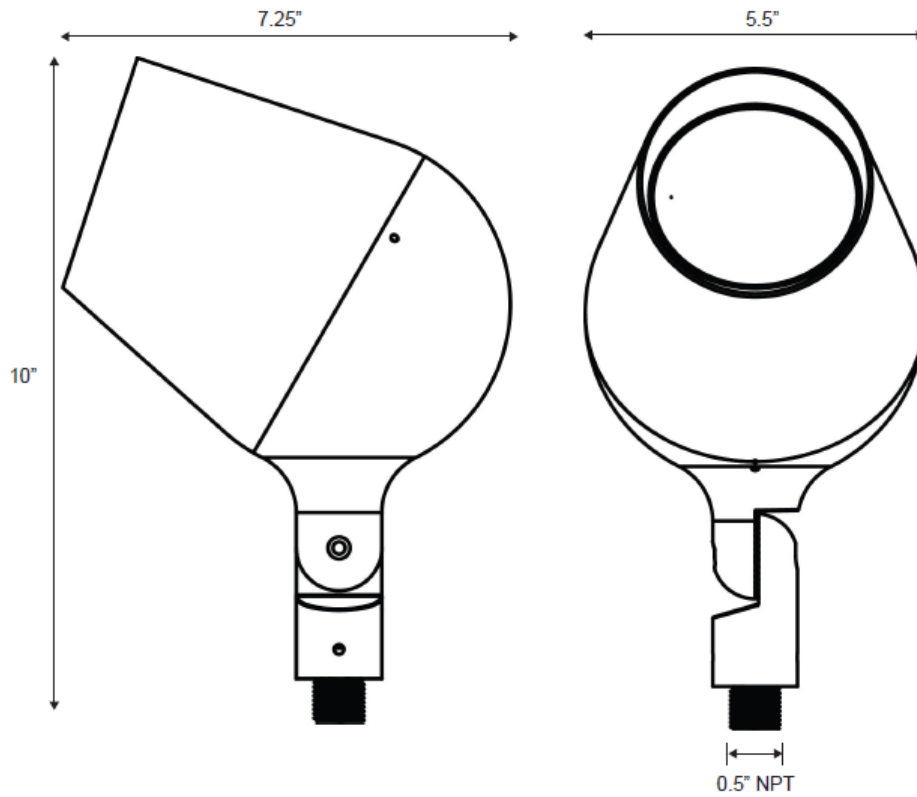
Cable length	39 in
Dimensions	7.25 in x 5.5 in x 10 in (HxWxD)
Fastening system	Threaded 1/2 in NPT
Housing	Die-casted aluminum
IP rating	IP66
Operating temperature	-22 to 122 °F (-30 to 50 °C)
Weight	3.4 lb

Optional Accessories

Pathway 102 mm Pole	QP4-ACC-POL-102-4ME
Pathway 76 mm Pole	QP4-ACC-POL-076-4ME
Pathway 3-Topper for 76 mm Pole	QP4-ACC-POL-3TO
Pathway Ground Spike Mount	QP4-ACC-MSP
Pathway Junction Box Mount	QP4-ACC-MJB
Pathway Junction Box Wall Mount	QP4-ACC-MJW
Pathway Pipe Extension	QP4-ACC-MSX
Pathway Surface Base Mount	QP4-ACC-MSB
Pathway Tree Mount Junction Box	QP4-ACC-MTB

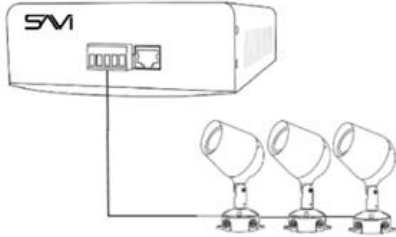
Compatible Products*	
Single Output Driver	QD1-96-01
Triple Output DIN Driver	QD3-288-01
Quad Output Driver	QD4-384-01

*Visit the [SAVI store](#) to view all of SAVI's branded products.

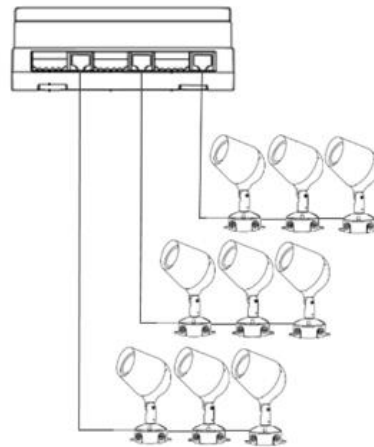


CONNECTIONS EXAMPLE

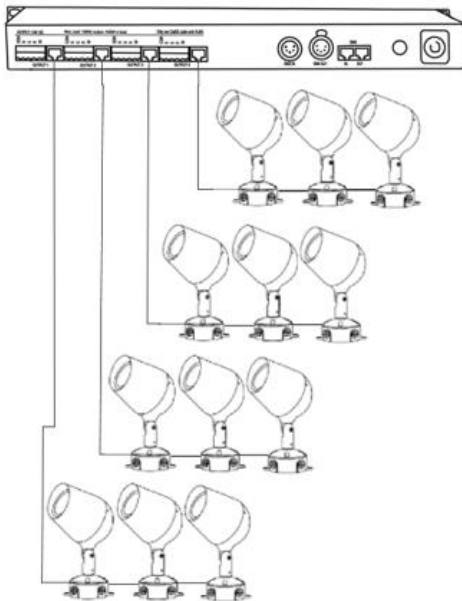
SINGLE OUTPUT DRIVER
 CONNECT ONE UNIT PER OUTPUT PORT,
 LINK UP TO 3
 (1 OUTPUT X 3 FIXTURE
 UP TO 3 TOTAL)



TRIPLE DIN OUTPUT DRIVER
 CONNECT ONE UNIT PER OUTPUT PORT,
 LINK UP TO 3
 (3 OUTPUT X 3 FIXTURES
 UP TO 9 TOTAL)



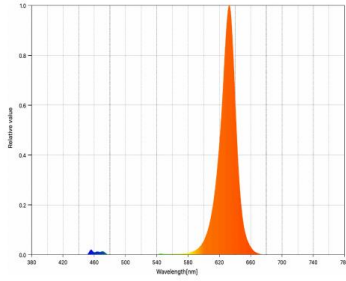
QUAD OUTPUT DRIVE
 CONNECT ONE UNIT PER OUTPUT PORT,
 LINK UP TO 10
 (4 OUTPUT X 3 FIXTURES
 UP TO 12 TOTAL)



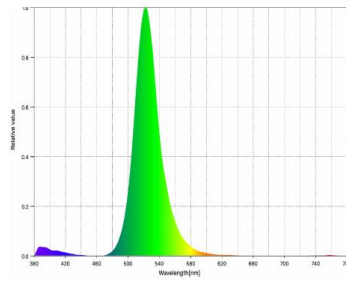
PHOTOMETRICS

LUMENS @ FULL OUTPUT: 1097
EFFICACY: 31 lm/W

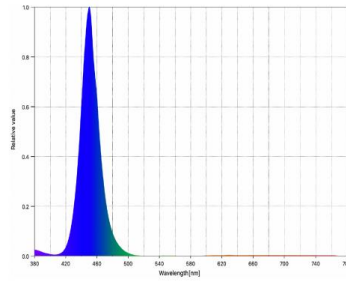
RED:
Peak Wavelength: 633nm
CIE 1931 x, y: 0.6824, 0.3004



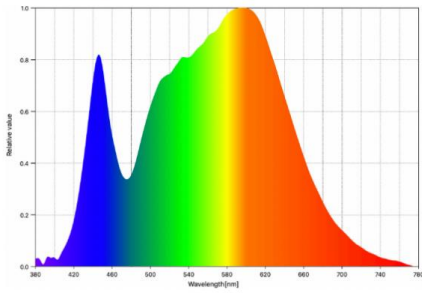
GREEN:
Peak Wavelength: 523nm
CIE 1931 x, y: 0.1770, 0.7265



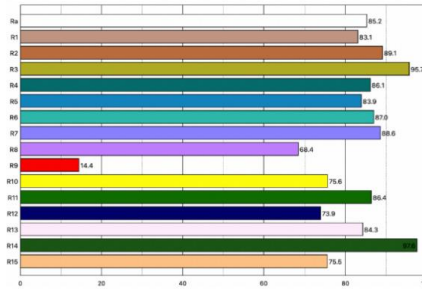
BLUE:
Peak Wavelength: 450nm
CIE 1931 x, y: 0.1535, 0.0262



WARM WHITE:
Peak Wavelength: 597nm
CCT: 4160K



COLOR RENDERING:



NOMINAL BEAM ANGLE = 29°



NOMINAL BEAM ANGLE = 29°

