



Offering an elegant yet simplified approach to indoor lighting, **QoraLux Pendant 6"** features a combination of 2983 K tunable white and vivid RGB color mixing to achieve rich, saturated colors. With an adjustable 8' hanging length, Pendant 6" is ideal for a wide range of applications and ceiling heights.

## KEY BENEFITS

- Simplified installation with Class 2 low-voltage wiring
- Create engaging lighting scenes, with RGB color mixing and 2983 K tunable white
- Suitable for high or low ceilings with an 8' adjustable hanging length
- Compounded energy-efficient savings with low-voltage power distribution
- Reduced failure rate with driverless fixtures
- Compatible with all QoraLux drivers
- Max power of 20 W

## SPECIFICATIONS

Control, Monitoring, and Network	
Control	DMX 512 (when using QoraLux driver)
DMX modes	4 channel mode: R, G, B, TW 7 channel mode: Dimmer, R, G, B, TW, strobe, macro

Lighting	
Color temperature	Tunable white, 2983 K
CRI (tunable white)	83
Each LED wattage	0.2 W
LED quantity	98
LED type	SMD 5050 R, G, B, TW
Lens angle	105°
Lumen	433 @full

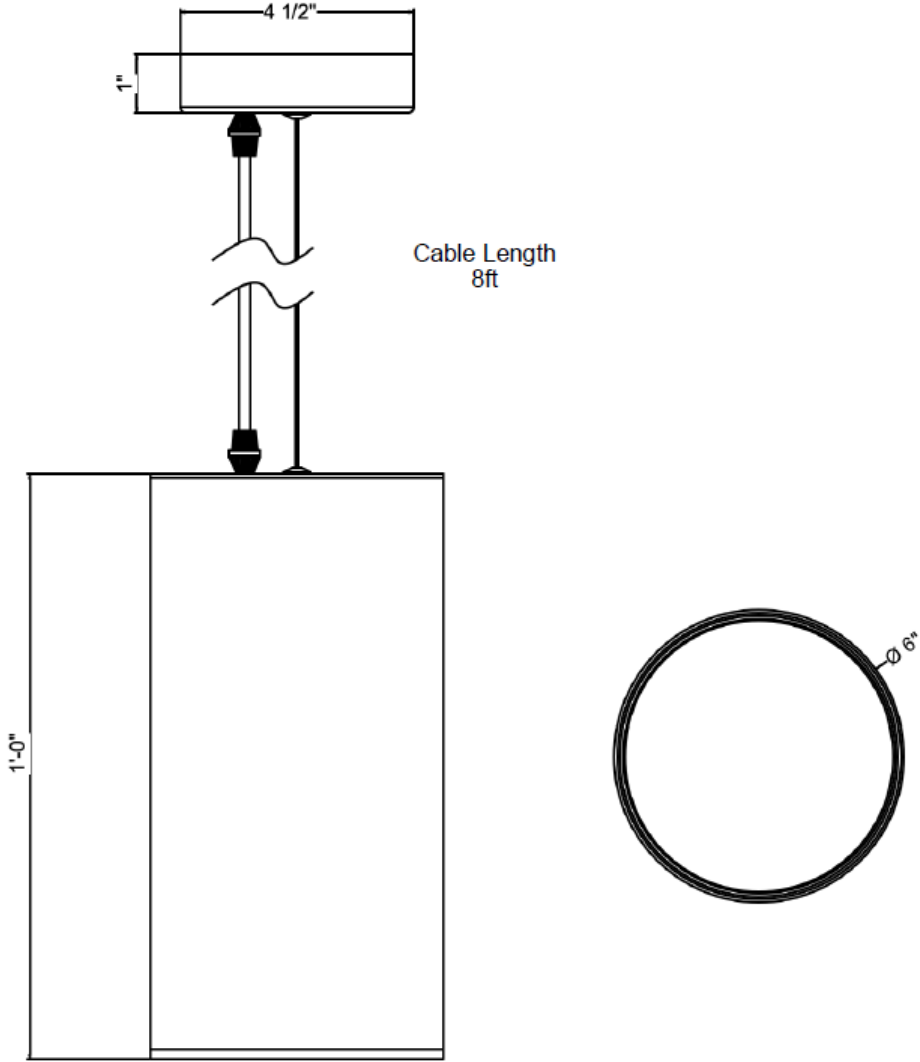
Electrical	
Connection	RJ45 in and out
Drive method	Constant voltage
Power input	24 VDC
Total max power	20 W

Mechanical/Environmental	
Cable length	Adjustable up to 8 ft
Dimensions	12 in x 6 in (HxW)
Fastening system	Universal ceiling mount brace
Housing	Extruded aluminum
IP rating	IP20
Operating temperature	-22 to 122 °F (-30 to 50 °C)
Weight	3.5 lb

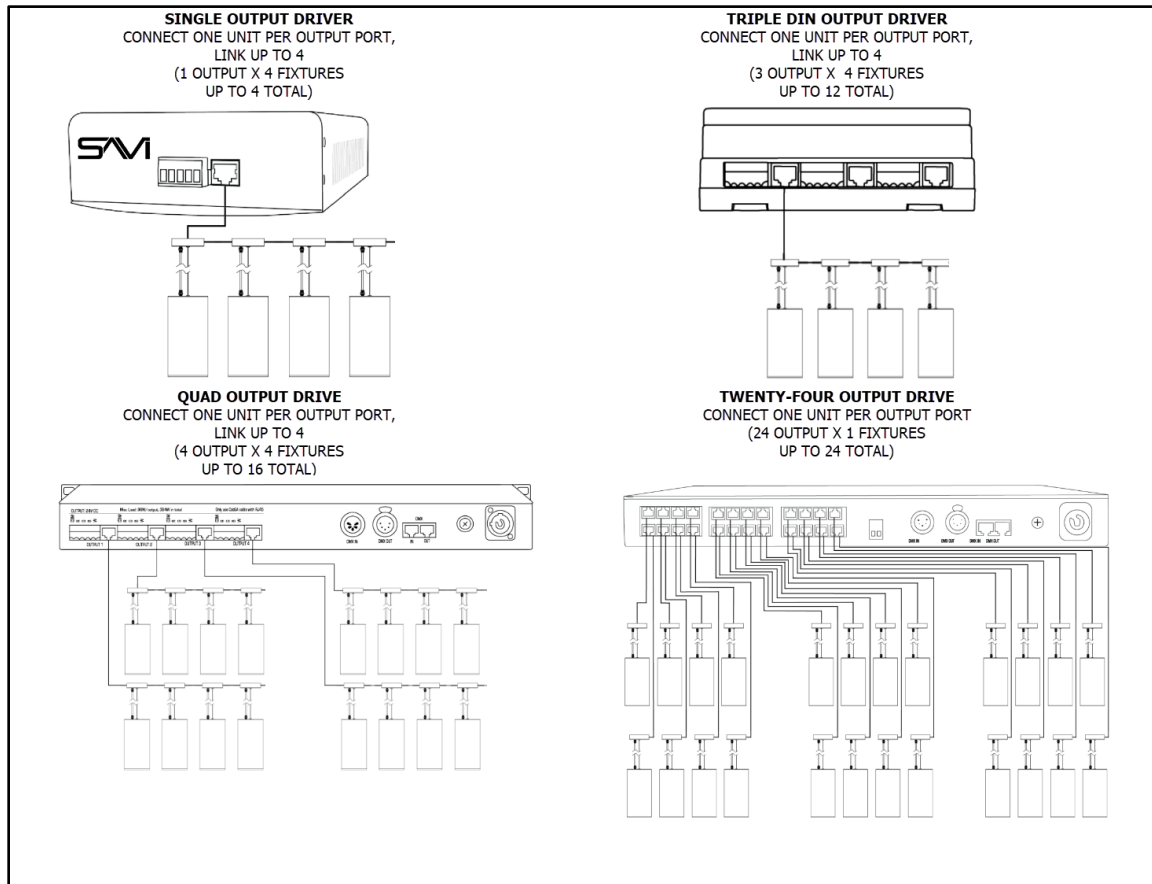
Included Accessories	
Universal ceiling mount brace	

Compatible Products*	
Single Output Driver	QD1-96-01
Triple Output DIN Driver	QD3-288-01
Twenty-Four Output Driver	QD24-480-01
Quad Output Driver	QD4-384-01

\*Visit the [SAVI store](#) to view all of SAVI's branded products.



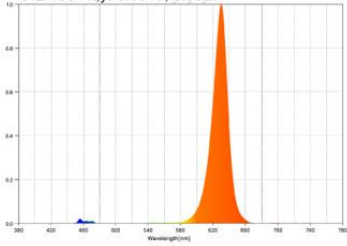
CONNECTIONS EXAMPLE



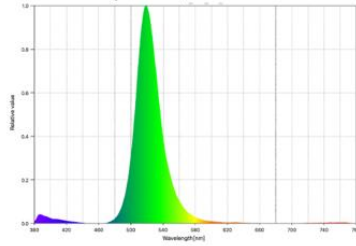
PHOTOMETRICS

LUMENS @ FULL OUTPUT: 433  
EFFICACY: 14 lm/W

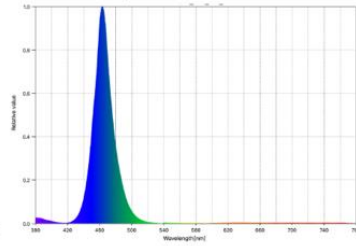
RED:  
Peak Wavelength: 630 nm  
CIE 1931 x,y: 0.6810, 0.3027



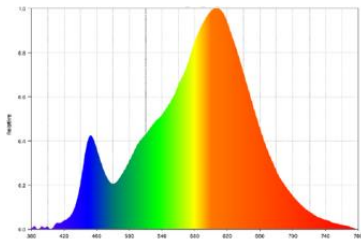
GREEN:  
Peak Wavelength: 519 nm  
CIE 1931 x,y: 0.1582, 0.7277



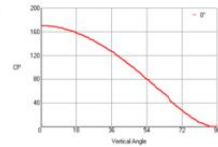
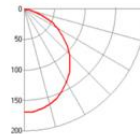
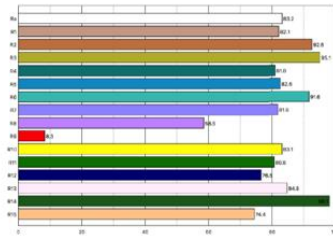
BLUE:  
Peak Wavelength: 463 nm  
CIE 1931 x,y: 0.1369, 0.0567



WARM WHITE:  
Peak Wavelength: 607 nm



COLOR RENDERING:



Nominal Beam Angle:



Nominal Beam Angle:



Zonal Lumen Summary

Zone	Lumens
0° - 15°	36
0° - 30°	130
0° - 45°	252
0° - 60°	361
0° - 90°	433
0° - 180°	433