



The **QoraLux Recessed 6"** offers energy-efficient downlighting, illuminating commercial offices, hotels, and more with bright light, tunable white, and vibrant RGB color mixing.

KEY BENEFITS

- Simplified installation with Class 2 low-voltage wiring
- Create engaging lighting scenes with RGB color mixing and 2983 K tunable white
- Compounded energy-efficient savings with low-voltage power distribution
- Reduced failure rate with driverless fixtures
- Compatible with all QoraLux drivers
- 6.75 in with 18 W max power

SPECIFICATIONS

Control, Monitoring, and Network	
Control	DMX 512 (when using QoraLux driver)
DMX modes	4 channel mode: R, G, B, TW 7 channel mode: Dimmer, R, G, B, TW, strobe, macro

Lighting	
Color temperature	Tunable white, 2983 K
CRI (tunable white)	83
Each LED wattage	0.2 W
LED quantity	91
LED type	SMD 5050 R, G, B, TW
Lens angle	105°
Lumen	900 @full

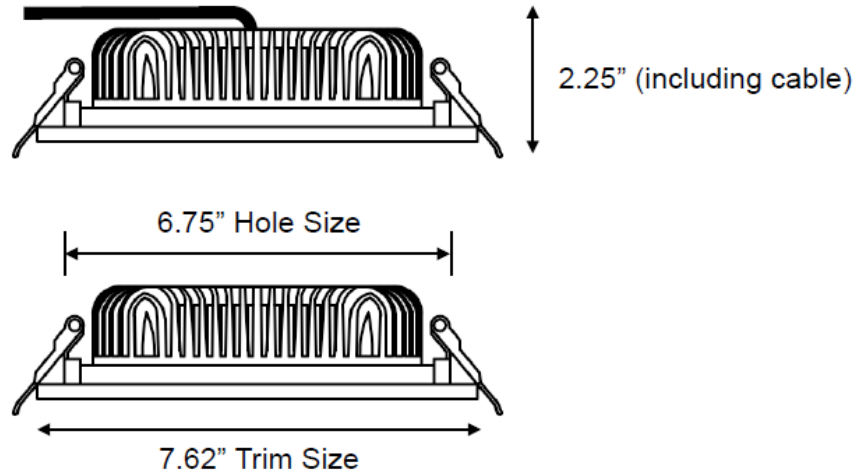
Electrical	
Connection	RJ45 in and out
Drive method	Constant voltage
Power input	24 VDC
Total max power	18 W

Mechanical/Environmental	
Cable length	1 ft 6 in
Dimensions	7.62 in x 2.25 in (LxH)
Fastening system	Spring-loaded recessed mount
Housing	Die-casted aluminum
IP rating	IP20
Operating temperature	-22 to 122 °F (-30 to 50 °C)
Weight	1.45 lb

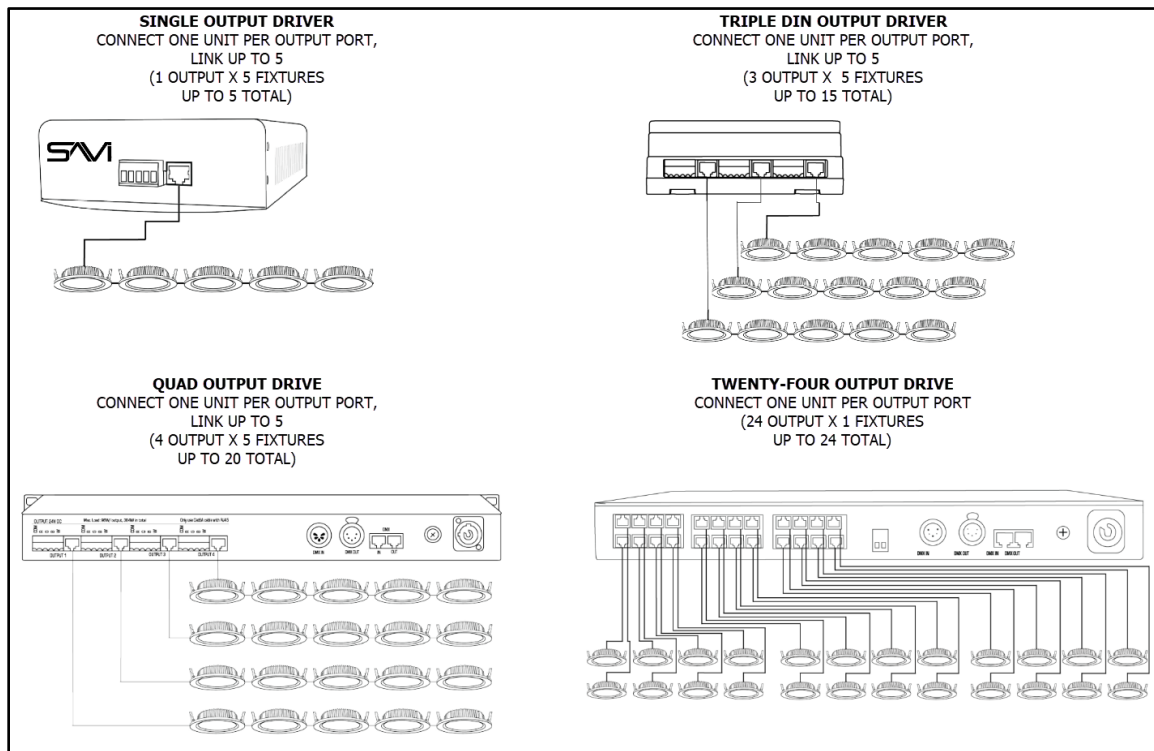
Optional Accessories	
Recessed 6" Raw Trim	QR6-HOU-TRI-RAW

Compatible Products*	
Single Output Driver	QD1-96-01
Triple Output DIN Driver	QD3-288-01
Twenty-Four Output Driver	QD24-480-01
Quad Output Driver	QD4-384-01

*Visit the [SAVI store](#) to view all of SAVI's branded products.



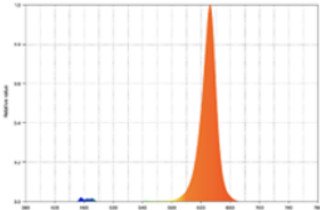
CONNECTIONS EXAMPLE



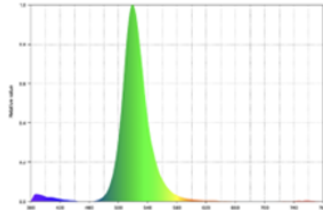
PHOTOMETRICS

LUMENS @ FULL OUTPUT: 900
EFFICACY: 28 lm/W

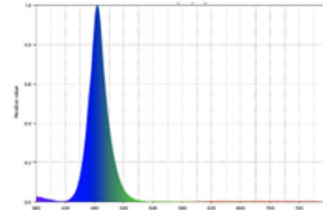
RED:
Peak Wavelength: 632nm
CIE 1931 x, y: 0.6813, 0.3005



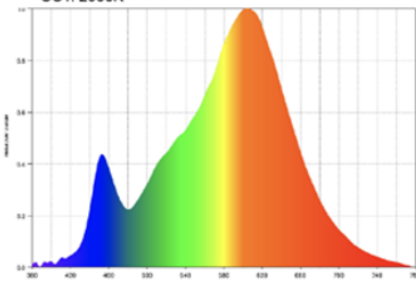
GREEN:
Peak Wavelength: 519nm
CIE 1931 x, y: 0.1607, 0.7231



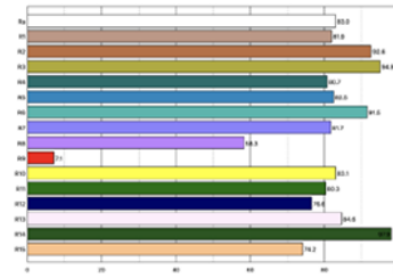
BLUE:
Peak Wavelength: 464nm
CIE 1931 x, y: 0.1374, 0.0595



WARM WHITE:
Peak Wavelength: 604nm
CCT: 2983K



COLOR RENDERING:



NOMINAL BEAM ANGLE = 105°



NOMINAL BEAM ANGLE = 105°



Zonal Lumen Summary

Zone	Lumens
0° - 15°	72
0° - 30°	261
0° - 45°	505
0° - 60°	728
0° - 90°	900
0° - 180°	900

