



The **QoraLux Recessed 8"** offers energy-efficient downlighting, illuminating commercial offices, hotels, and more with bright light, tunable white, and vibrant RGB color mixing.

## KEY BENEFITS

- Simplified installation with Class 2 low-voltage wiring
- Create engaging lighting scenes, with RGB color mixing and 2960 K tunable white
- Compounded energy-efficient savings with low-voltage power distribution
- Reduced failure rate with driverless fixtures
- Compatible with all QoraLux drivers
- 8.36 in with 30 W max power

## SPECIFICATIONS

Control, Monitoring, and Network	
Control	DMX 512 (when using QoraLux driver)
DMX modes	4 channel mode: R, G, B, TW 7 channel mode: Dimmer, R, G, B, TW, strobe, macro

Lighting	
Color temperature	Tunable white, 2960 K
CRI (tunable white)	83
Each LED wattage	0.2 W
LED quantity	140
LED type	SMD 5050 R, G, B, TW
Lens angle	112°
Lumen	1429 @full

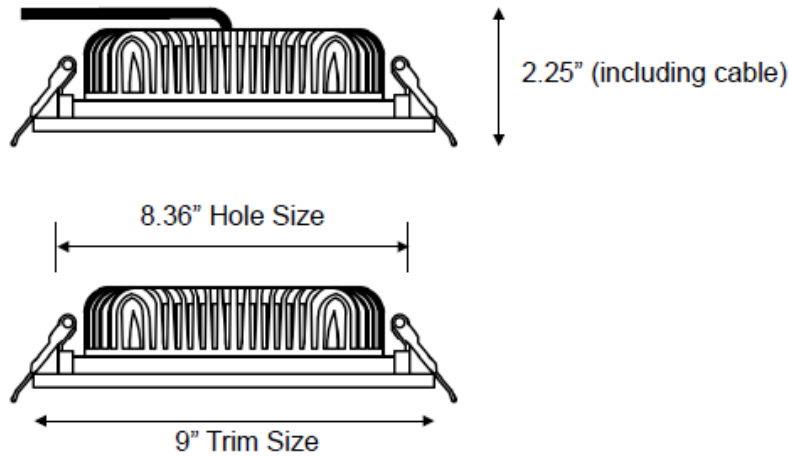
Electrical	
Connection	RJ45 in and out
Drive method	Constant voltage
Power input	24 VDC
Total max power	30 W

Mechanical/Environmental	
Cable length	1 ft 6 in
Dimensions	9 in x 2.25 in (LxH)
Fastening system	Spring-loaded recessed mount
Housing	Die-casted aluminum
IP rating	IP20
Operating temperature	-22 to 122 °F (-30 to 50 °C)
Weight	2.1 lb

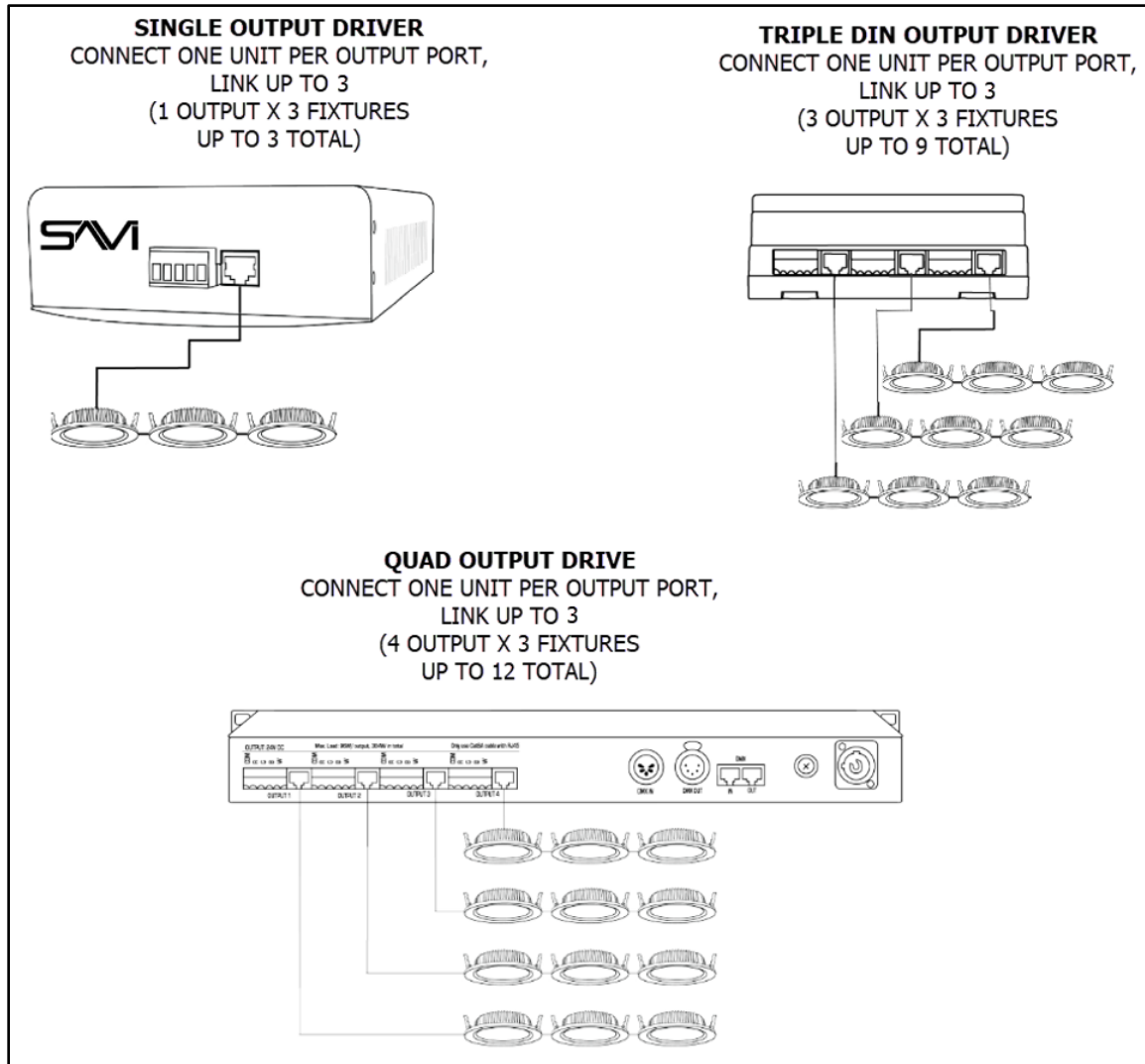
Optional Accessories	
Recessed 8" Raw Trim	QR8-HOU-TRI-RAW

Compatible Products*	
Single Output Driver	QD1-96-01
Triple Output DIN Driver	QD3-288-01
Quad Output Driver	QD4-384-01

\*Visit the [SAVI store](#) to view all of SAVI's branded products.



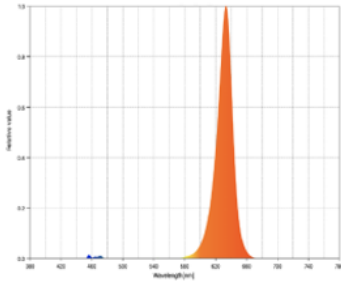
**CONNECTIONS EXAMPLE**



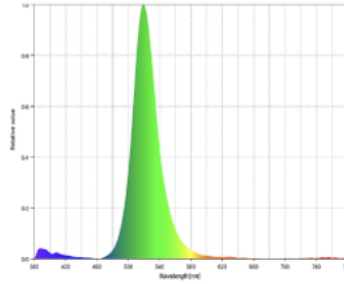
PHOTOMETRICS

Lumens @ Full Output: 1427  
Efficacy: 38 lm/W

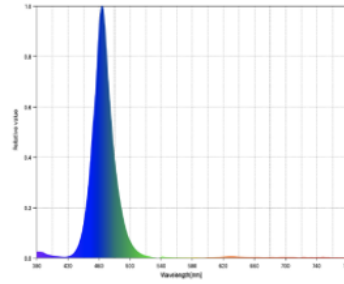
**RED:**  
Peak Wavelength: 633nm  
CIE 1931 x, y: 0.6900, 0.3004



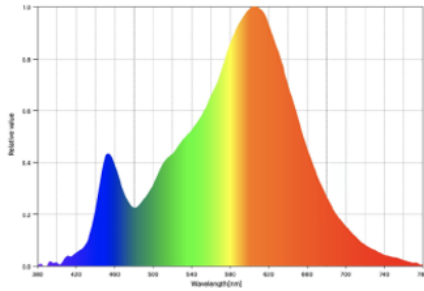
**GREEN:**  
Peak Wavelength: 519nm  
CIE 1931 x, y: 0.1637, 0.7154



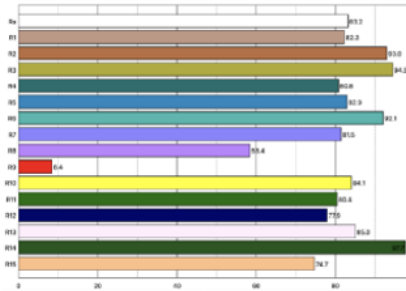
**BLUE:**  
Peak Wavelength: 464nm  
CIE 1931 x, y: 0.1376, 0.0605



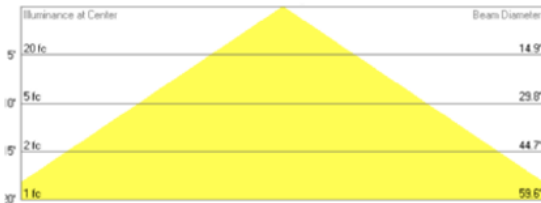
**WARM WHITE:**  
Peak Wavelength: nm  
CCT: 2960K



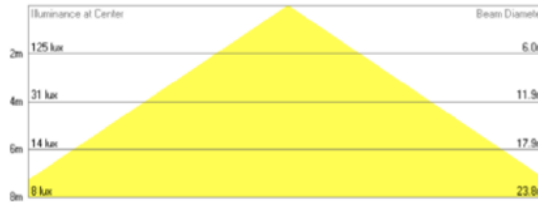
**COLOR RENDERING:**



**NOMINAL BEAM ANGLE = 112°**



**NOMINAL BEAM ANGLE = 112°**



**Zonal Lumen Summary**

Zone	Lumens
0° - 15°	105
0° - 30°	391
0° - 45°	770
0° - 60°	1129
0° - 90°	1427
0° - 180°	1427

